

# Ward - Churnet

## Councillor

Chris Smith – Conservative

## Area

Churnet covers 1,328 hectares. This represents 3.4% of East Staffordshire.



## 2001 & 2011 Census

The Census which takes place every ten years provides the most authoritative statistics on our local population. The 2011 Census work has started but the first results from this will not be available until September 2012, and this will initially be at a local authority level. Further results will be released by the Office for National Statistics throughout 2013/14. Therefore, many of the statistics throughout this report refer to the 2001 Census.

### Summary statistics from the 2001 Census of Population

Actual	Churnet	East Staffordshire	England & Wales
Population	2,462	103,770	52,041,916
Total permanent households	959	42,717	21,660,475
Percentage	%	%	%
Male	50.2	48.7	48.7
Female	49.8	51.3	51.3
Ethnic minority	3.6	6.1	8.7
Religion – Christian	82.8	77.4	71.8
No Religion	10.0	11.5	14.8
Children aged 0-15	20.8	21.2	20.2
People aged 16-74	73.1	71.7	72.2
People aged 75+ years	6.1	7.1	7.6
Employed (of those aged 16-74)	59.5	63.1	60.6
Looking after home/family (of those aged 16-74)	6.1	6.6	6.5
Retired (of those aged 16-74)	15.4	14.5	13.6
Occupation – Manager or Senior Official	13.8	15.1	15.1
Occupation – Process, Plant or Machine Operative	11.8	12.1	8.5
Households with no car	19.4	23.2	26.8
Households with 2 or more cars	33.9	32.6	29.4
Travel to Work – by Bike or On Foot	18.0	15.1	12.8
Travel to Work – Drive a Car or Van	56.3	61.8	55.2
Residents with limiting long term illness	17.2	17.1	18.2
Residents who described their health as 'not good'	7.4	7.9	9.2
Residents who provide unpaid care	9.7	10.0	10.0
Owner occupied households	70.4	75.8	68.9
Rented from a Council or RSL	21.1	14.1	19.2
No Central Heating	12.2	15.3	8.5
Pensioner living alone	12.7	14.0	14.4
Single person households	24.3	27.7	30.0
Lone parent households	6.0	5.7	6.5

Source: 2001 Census Area Statistics

Key points from the 2001 Census data show that when compared to East Staffordshire and England & Wales, Churnet has:

- A smaller Black & Minority Ethnic population
- A higher proportion of Christians and a lower proportion with no religion
- A lower proportion of children than the Borough average
- A lower proportion of residents over the age of 75 years
- A lower proportion of residents who are employed and who look after the family/home
- A higher proportion of residents who are retired
- A lower proportion of residents whose occupation is manager or senior official
- A lower proportion of process, plant or machine operatives than the Borough average
- A lower proportion of households with no car and a higher proportion with 2 or more
- A higher proportion who travel by bike/foot and a lower rate than the Borough average who drive
- A higher proportion of LLTI than the Borough average but a lower rate with 'not good' health
- A lower proportion of residents who provide unpaid care
- A lower proportion of owner occupied households than the Borough average
- A higher proportion that are rented from the Council or an RSL
- A lower proportion of households without central heating than the Borough average
- A lower proportion of single pensioners and single person households

## Population

The most authoritative population estimates are produced every ten years based on the Census of Population. The 2001 Census gives the population of Churnet as 2,462, which is a rise of 5.6% since 1991.

### Age of Resident Population in 2001 - %

	Churnet	East Staffordshire	England & Wales
Under 16	20.8	21.2	20.2
16 to 19	6.7	4.8	4.9
20 to 29	9.0	10.6	12.6
30 to 59	41.5	42.6	41.5
60 to 74	15.9	13.7	13.3
75 and over	6.1	7.1	7.6
<b>Average Age</b>	<b>38.8</b>	<b>38.6</b>	<b>38.6</b>

Source: 2001 Census Area Statistics

The above figures are updated to produce mid year population estimates in the inter-censal period. The latest figures are for 2009 and these estimate the population of Churnet to be 2,742, which is a rise of 11.4% on the 2001 Census figure.

### Mid 2009 Population Estimates by Broad Age Group

	All Ages	Children 0 - 15	Working Age 16-64M/59F	Older People 65M/60F & over
Churnet	2,742	19.3	58.7	22.0
East Staffordshire	108,800	19.6	60.0	20.4
Staffordshire	828,700	17.9	60.4	21.7
West Midlands	5,431,100	19.4	60.6	20.0
England	51,809,700	18.7	61.9	19.3

Source: Office for National Statistics Crown Copyright 2010

In addition to the ward level mid year population estimates the Office for National Statistics has produced parish level mid year estimates. The latest are for 2009. Please note these are estimates.

### Mid-2009 Population Estimates for Parishes

Parish Name	Ward	All Ages	Children Aged 0 to 15	Young People 16 to 24	Those Aged 25 to 59	Older People Aged 60+
Denstone	Churnet	1165	211	136	480	338
Rocester	Churnet	1577	319	150	741	367

Source: Office for National Statistics © Crown Copyright 2011

### Ethnic Group – Resident Population in 2001 - %

	Churnet	East Staffs	England & Wales
White	96.4	93.9	91.3
Mixed	0.5	0.9	1.3
Asian or Asian British	1.1	4.3	4.4
Black or Black British	0.4	0.6	2.2
Chinese or Other Ethnic Group	1.6	0.3	0.9
<b>Black &amp; Minority Ethnic</b>	<b>3.6</b>	<b>6.1</b>	<b>8.7</b>

Source: 2001 Census Area Statistics

## Religion – Resident Population - 2001

In the 2001 Census 82.8% of Churnet residents stated their religion to be Christian. This is above the East Staffordshire average of 77.4% and the England & Wales average of 71.8%. 10.0% responded with 'No Religion'. This is below the East Staffordshire average of 11.5% and the England & Wales average of 14.8%. Christianity is the only major religion in Churnet. All other religions each account for less than 1.0% of the local population. This contrasts with the picture for the whole Borough, as Islam is the religion of 4.0% of East Staffordshire residents. However, it is in line with the low Black & Minority Ethnic (BME) population in Churnet.

Key points from the latest population data show that when compared to East Staffordshire and England, Churnet has:

- A similar percentage of children
- A lower percentage of working age residents
- A higher percentage of older people
- A slightly higher average age (2001)
- A smaller Black & Minority Ethnic population
- A higher percentage of Christians and a lower percentage who have no religion

## Economic Activity

### Economic Activity – Resident Population Aged 16 to 74 - %

	Churnet	East Staffordshire	England & Wales
Employed	59.5	63.1	60.6
Unemployed	2.2	3.1	3.4
Economically active full-time students	2.0	2.1	2.6
Retired	15.4	14.5	13.6
Economically inactive students	6.2	3.1	4.7
Looking after home/family	6.1	6.6	6.5
Permanently sick or disabled	4.2	4.3	5.5
Other economically inactive	4.3	3.2	3.1

Source: 2001 Census Area Statistics

63.7% of all Churnet residents aged 16 to 74 are economically active (full and part-time employed, self-employed, unemployed or economically active full-time student). This is below the East Staffordshire average of 68.3% and the England & Wales average of 66.5%.

Key points from the 2001 Census economic activity data show that when compared to East Staffordshire and England & Wales, Churnet has:

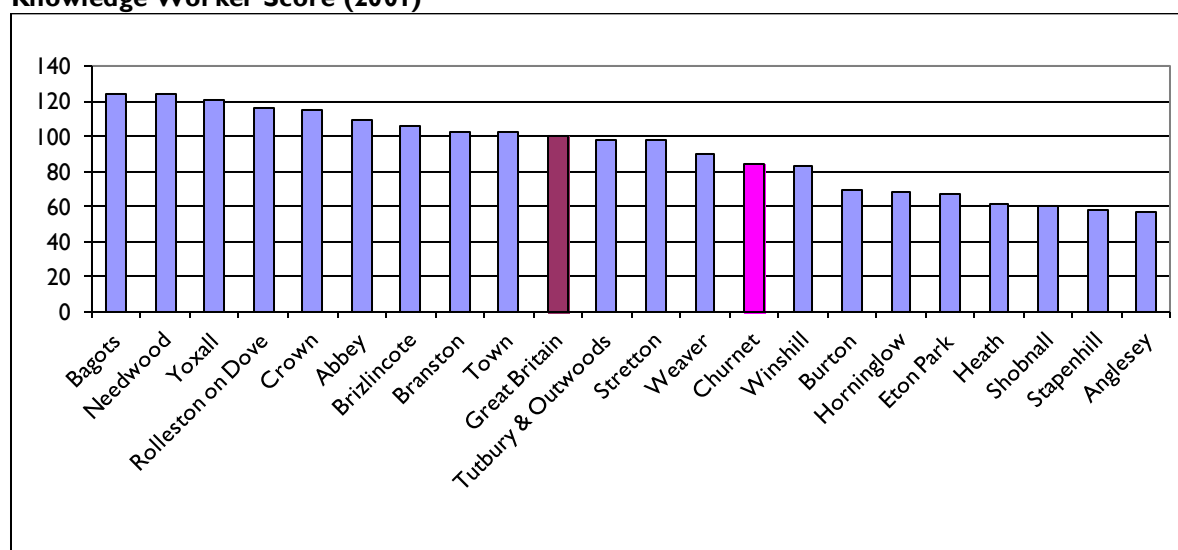
- A lower employment rate
- A lower proportion of economically active full-time students but a much higher rate of economically inactive students
- A higher proportion of retired residents
- A lower proportion of those who are looking after the home/family
- A lower proportion of those who are permanently sick or disabled
- A higher 'other' economically inactive rate

### Occupation Groups – Resident Population Aged 16-74 - %

	Churnet	East Staffs	England & Wales
Managers & Senior Officials	13.8	15.1	15.1
Professional	10.6	9.4	11.2
Associate Professional & Technical	9.4	11.0	13.8
Admin & Secretarial	8.6	11.3	13.3
Skilled Trades	15.3	12.9	11.6
Personal Service	6.6	6.5	6.9
Sales & Customer Service	6.0	6.8	7.7
Process, Plant & Machine Operatives	11.8	12.1	8.5
Elementary e.g. labourers, porters	18.0	14.7	11.9

Source: 2001 Census Area Statistics

### Knowledge Worker Score (2001)



Source: Local Knowledge; Census 2001

The Knowledge Worker Score is an index showing the proportion of working age residents that are employed in knowledge occupations. These occupations are based on the following SOC groups:

- 1) Managers and Senior Officials
- 2) Professional Occupations
- 3) Associate Professional and Technical Occupations

The national average is 100 – if the figure is below 100 for a ward then a lower proportion of its residents work in knowledge occupations.

Key points from the 2001 Census occupation group data show that when compared to East Staffordshire and England & Wales, Churnet has:

- A lower proportion of managers and senior officials, associate professional and technical, admin and secretarial, sales and customer service occupations.
- A higher proportion of skilled trades and elementary occupations.
- A lower proportion than the Borough average of process, plant and machine operatives.
- A lower proportion of knowledge workers than the Great Britain average.

### Industrial Groups – Resident Population Aged 16-74 in Employment - %

	Churnet	East Staffordshire	England & Wales
Agriculture; Hunting; Forestry & Fishing	4.6	2.1	1.5
Mining & Quarrying	0.8	0.3	0.3
Manufacturing	24.7	22.7	15.0
Electricity; Gas & Water Supply	0.3	0.8	0.7
Construction	6.5	7.0	6.8
Wholesale & Retail Trade; Repair of Motor Vehicles	12.9	17.3	16.8
Hotels & Restaurants	6.9	4.9	4.8
Transport; Storage & Communication	5.3	6.5	7.0
Financial Intermediation	1.2	1.9	4.7
Real estate; Renting & Business Activities	8.3	10.4	13.0
Public Administration & Defence; Social Security	2.2	3.5	5.7
Education	13.8	7.5	7.8
Health & Social Work	7.6	10.5	10.8
Other	4.8	4.5	5.2

Source: 2001 Census Area Statistics

Key points from the 2001 Census Industry data show that when compared to East Staffordshire and England & Wales, Churnet has:

- A higher proportion of residents employed in agriculture, hunting, forestry & fishing, manufacturing, hotels & restaurants and education
- A lower proportion in construction, wholesale & retail trade, repair of motor vehicles, transport, storage & communications, financial intermediation, real estate, renting and business activities, public administration & defence, social security and health & social work.

### Travel to Work Methods – All People Aged 16-74 in Employment - %

	Churnet	East Staffs	England & Wales
Work from home	11.2	9.6	9.2
Underground; metro; light rail; Tram	0.0	0.0	3.0
Train	0.6	0.8	4.1
Bus; Mini Bus or coach	5.1	3.7	7.4
Motorcycle; Scooter; moped	0.7	1.0	1.1
Driving a car or van	56.3	61.8	55.2
Passenger in a car or van	7.2	7.1	6.3
Taxi or minicab	0.0	0.6	0.5
Bicycle	3.5	4.1	2.8
On foot	14.5	11.0	10.0
Other	0.8	0.4	0.5

Source: 2001 Census Area Statistics

Key points from the 2001 Census Travel to Work data show that when compared to East Staffordshire and England & Wales, Churnet has:

- A higher proportion of residents who work from home
- A higher proportion of residents than the Borough average who travel by bus
- A lower proportion of residents than the Borough average who drive to work
- A higher proportion of residents who are passengers in a car or van
- A lower proportion of residents than the Borough average who use a bicycle
- A higher proportion who travel on foot

## Number of Employees & Proportion of Full-time & Part-time Employment – 2009

	Number of Employees	% Full time	% Part time
Churnet	2,600	86.4	13.6
East Staffordshire	53,000	70.3	29.7
Staffordshire	309,300	68.0	32.0
England & Wales	23,823,600	67.9	32.1

Source: Business Register and Employment Survey 2009 (Figures are rounded to nearest 100)

These figures exclude farm agriculture

Key points from the 2009 Employment Survey data show that when compared to the East Staffordshire average, Churnet has:

- A significantly higher proportion of full-time employees
- A significantly lower proportion of part-time employees

## Unemployment

April 2011	Churnet	East Staffordshire	Staffordshire	England
Total unemployed - %	1.6	2.9	2.8	3.7
<b>Of which:</b>				
% aged under 25	25.0	31.1	31.7	28.2
% unemployed for over 12 months	7.1	8.2	11.4	14.0

Source: Nomis – Claimant Count

Key points from the unemployment data show that when compared to Staffordshire and East Staffordshire, Churnet has:

- A lower unemployment rate
- A lower youth unemployment proportion
- A lower long term unemployment proportion

## Education

### Key Stage 2 Test Results in 2010 - %

Key Stage 2 Results	Both English & Maths	English	Maths	Average Point Score
<b>2010</b>	%		%	
Ryecroft CE (C) Middle School	58%	67%	65%	25.3
Staffordshire Average	74	81	81	27.6
England Average	73	80	79	27.5

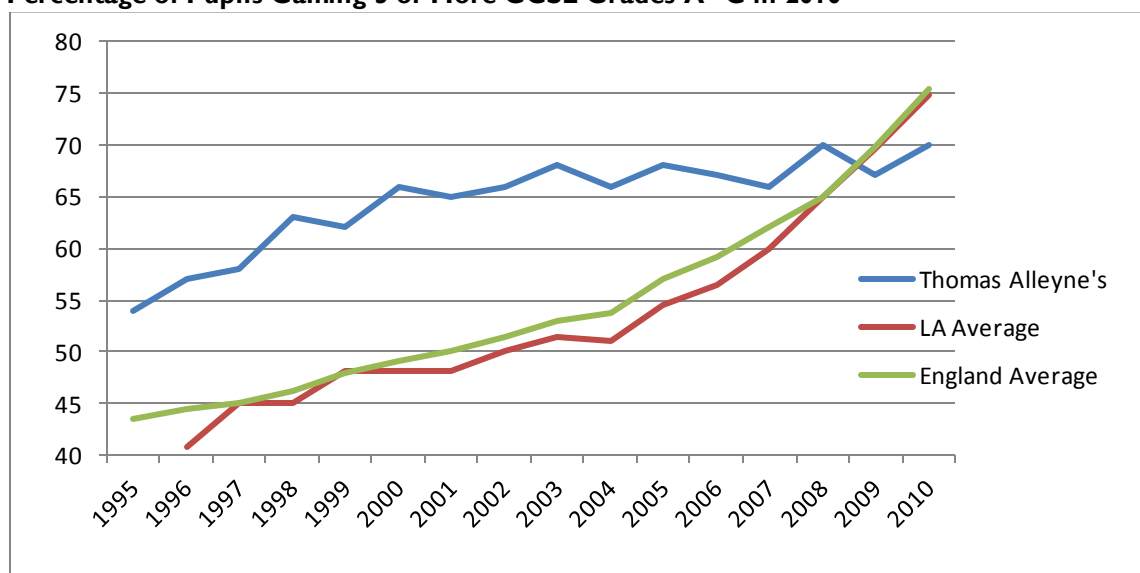
The table shows the percentage of eligible pupils achieving Level 4 or above in each subject. Level 4 is the level expected of most 11 year olds.

Source: DfES

School performance tables - 2010	Number of Pupils (all ages)	Overall absence	Unauthorised absence	Persistent absence
Local Authority Average		6.7%	0.8%	4.1%
England (all schools)		6.9%	1.4%	4.6%
Abbot Beyne School	851	6.1%	0.4%	3.2%
Abbots Bromley School for Girls	254	Absence return not required		
Blessed Robert Sutton Catholic College	685	7.4%	1.6%	5.1%
De Ferrers Specialist Technology College	1916	6.3%	0.5%	4.0%
Denstone College	577	Absence return not required		
John Taylor High School	1479	4.7%	0.3%	2.0%
Paget High School	1003	7.7%	0.8%	5.8%
Paulet High School	696	6.7%	0.9%	5.3%
Thomas Alleyne's High School	1346	7.2%	1.6%	6.2%

Source: DfES

### Percentage of Pupils Gaining 5 or More GCSE Grades A\*-C in 2010



Source: DfES

### Percentage of Pupils With 5+ GCSE's Grades A\* - C Including English & Maths

% of pupils at the end of Key Stage 4 achieving 5+A*-C (and equivalent) including English and Maths GCSEs	2007	2008	2009	2010
Local Authority	45.7%	49.7%	50.8%	54.0%
England (state funded schools only)	45.6%	48.2%	50.7%	55.2%
England (all schools)	46.3%	47.6%	49.8%	53.4%
Abbot Beyne School	38%	34%	41%	42%
Abbots Bromley School for Girls	100%	71%	75%	89%
Blessed Robert Sutton Catholic Sports College	64%	52%	47%	62%
De Ferrers Specialist Technology College	48%	55%	55%	55%
Denstone College	94%	90%	79%	86%
John Taylor High School	69%	77%	71%	72%
Paget High School	36%	37%	40%	42%
Paulet High School	23%	30%	34%	60%
Thomas Alleyne's High School	60%	58%	49%	58%

Source: DfES



### School Leaver Activity Survey in 2010 - %

	Sub-total: Continuing with structured learning %	Continued full-time education %	Structured learning in the workplace %	Jobs with no structured training %	Not yet settled in any full- time positive activity %	Failed to respond or moved away %
<b>Thomas Alleyne's – 335 school leavers</b>						
On leaving Y11 in 2009	92.8	85.4	7.5	1.8	4.5	0.9
% point change	-3.8	-9.9	5.9	1.2	0.3	2.4
One year on in 2010	89.0	75.5	13.4	3.0	4.8	3.3
<b>East Staffordshire – 1546 school leavers</b>						
On leaving Y11 in 2009	92.2	85.0	7.2	1.4	5.6	0.8
% point change	-5.9	-11.6	5.7	1.2	1.8	2.9
One year on in 2010	86.3	73.4	12.9	2.6	7.4	3.7
<b>Staffordshire Local Authority Average – 10,149 school leavers</b>						
On leaving Y11 in 2009	94.9	87.2	7.7	0.8	3.7	0.6
% point change	-7.6	-12.1	4.5	1.3	2.5	3.8
One year on in 2010	87.3	75.1	12.2	2.1	6.2	4.4

Source: Connexions Staffordshire Ltd

### Post 16 Education – Average point score - (including A\* grade in 2010)

	Average point score per student			Average point score per exam		
	2008	2009	2010	2008	2009	2010
Local Authority Average	693.7	707.5	699.1	198.4	203.2	206.4
England Average (excluding independent)	721.3	721.3	726.6	205.8	208.3	211.1
Abbot Beyne School	769.9	686.1	750.6	209.1	195.4	213.2
Abbots Bromley School for Girls	792	783.6	859.3	231.6	222.4	230.5
Blessed Robert Sutton Catholic Sports College	462.2	695.8	569.6	168.1	205.7	173.7
Burton College - Burton on Trent	563.5	614.1	584.3	212.8	213.1	213.1
De Ferrers Specialist Technology College	760.7	798.4	843.5	188	189	189.5
Denstone College	757.2	821.9	777	228.8	231.7	236.9
John Taylor High School	770.3	779.3	855.8	192	205.9	222
Paget High School	599.7	602.7	500.8	185.8	183.5	181.2
Paulet High School	435	507.3	643.8	153.5	167.2	191.6
Thomas Alleyne's High School	715.3	709.7	710.5	208.5	203	199.4

Source: DfES

### Percentage in Receipt of Free School Meals – October 2010

Primary Schools	%	Middle & Secondary Schools	%
All Saints First - Denstone	2.2	Thomas Alleyne's High	4.3
Dove First	14.5	Ryecroft CE (C) Middle	8.3
East Staffordshire	14.5	East Staffordshire	8.7
Staffordshire	13.3	Staffordshire	9.4

Source: Staffordshire LEA

The School Census summaries, at a ward level, some of the information set out above. It is collected by Staffordshire County Council and covers nursery, primary, middle, secondary and special schools in the maintained sector in Staffordshire. It includes information on pupils by gender, free school meal eligibility, ethnicity, special educational needs, travel to school methods and gifted and talented status. If there are less than 10 children in one category the percentage is given as Suppressed.

## School Census 2010

2010	Churnet	East Staffordshire	Staffordshire
% of pupils who are girls	53.3	48.8	48.8
% of pupils who are boys	46.7	51.2	51.2
% of BME pupils	Suppressed	18.6	7.2
% who have Free School Meals	13.4	13.4	12.4
% of pupils subject to School Action	10.7	12.8	10.6
% of pupils subject to School Action Plus	4.2	12.8	10.6
% of pupils who have a SEN Statement	Suppressed	2.3	2.7
% of pupils who are subject to School Action Plus or have a SEN Statement	6	6.6	7.6
% of pupils travelling to school by car/van	25.1	23.7	27.7
% of pupils travelling to school by bus	3.5	1.9	2.4
% of pupils walking to school	35.6	58.1	54.8
% of Pupils who are Gifted or Talented	11.3	10.3	10.4

Source: Staffordshire Observatory/Staffordshire County Council

## Qualifications Held by Resident Population Aged 16-74 in 2001 - %

	Churnet	East Staffordshire	England & Wales
Had no qualifications	36.1	31.8	29.1
Qualified to degree level or higher	15.4	16.0	19.8

Source: 2001 Census Area Statistics

Key points from the schools data show that when compared to Staffordshire and England averages, schools in and around Churnet have:

- A lower percentage of eligible pupils achieving Level 4+ in all subjects at Key Stage 2
- A lower overall average point score for Level 4+ at Key Stage 2
- A higher level of absence at the senior school
- A lower percentage of eligible pupils achieving 5 or more GCSEs at grades A-C
- A higher percentage of eligible pupils achieving 5 or more GCSEs at grades A-C that include English & Maths
- A higher percentage of school leavers continuing with structured learning in 2010
- A lower percentage of school leavers not yet settled in any full-time positive activity in 2010
- A lower average point score per student than the England average and a lower average point score per exam at GCE level (post 16)
- A lower percentage of pupils receiving free school meals at All Saints First but a higher rate at Dove First than the Staffordshire average
- A lower percentage of pupils receiving free school meals at the secondary schools

Key points from the Census show that when compared to East Staffordshire and England & Wales averages, residents in Churnet have:

- A higher proportion of residents with no qualifications
- A lower proportion of residents qualified to degree level or above

Key points from the 2010 School Census show that when compared to East Staffordshire averages, pupils in Churnet are:

- Less likely to be subject to School Action or School Action Plus
- More likely to travel to school by car
- More likely to travel to school by bus
- Less likely to walk to school
- More likely to be termed gifted or talented.

# Health

## Key Health Comparators - %

2001 Census Area Statistics	Churnet	East Staffordshire	England & Wales
Residents with limiting long-term illness (2001)	17.2	17.1	18.2
Residents who described their health as 'Good'	70.5	69.4	68.6
Residents who described their health as 'Fairly Good'	22.1	22.6	22.2
Residents who described their health as 'Not Good'	7.4	7.9	9.2
Residents who provide unpaid care	9.7	10.0	10.0

Source: 2001 Census Area Statistics

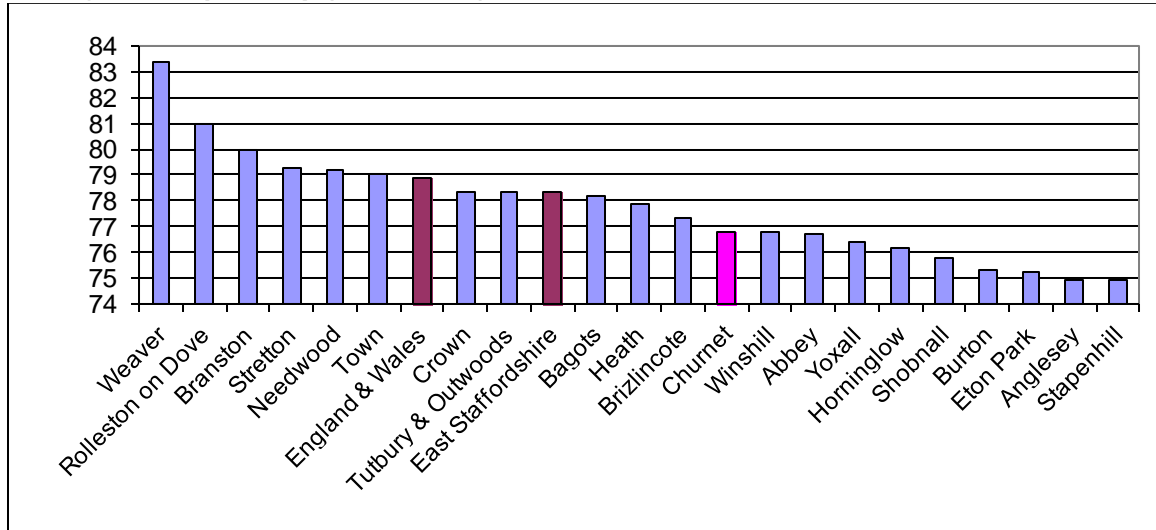
## Health Lifestyle Behaviours – 2000/2002

	Churnet	East Staffordshire	England
Proportion of Residents who Binge Drink	15.7	16.2	16.5
Proportion of Residents who are Obese	27.3	23.8	20.5
Proportion of Residents who Smoke	22.8	24.6	24.2
Proportion of Adult Residents who eat 5+ Fruit & Vegetable Portions per day	22.5	23.6	22.2
Proportion of Child Residents who eat 3+ Fruit & Vegetable Portions per day	29.9	32.8	35.1

The data for this indicator is part of a data modelling exercise carried out based on the Health Survey of England. Results are based on 3 year sample data of 16,000 adults and 4,000 children each year. The figures should not be used as actual figures but rather should be viewed as expected levels based on the socio-demographic characteristics of the area.

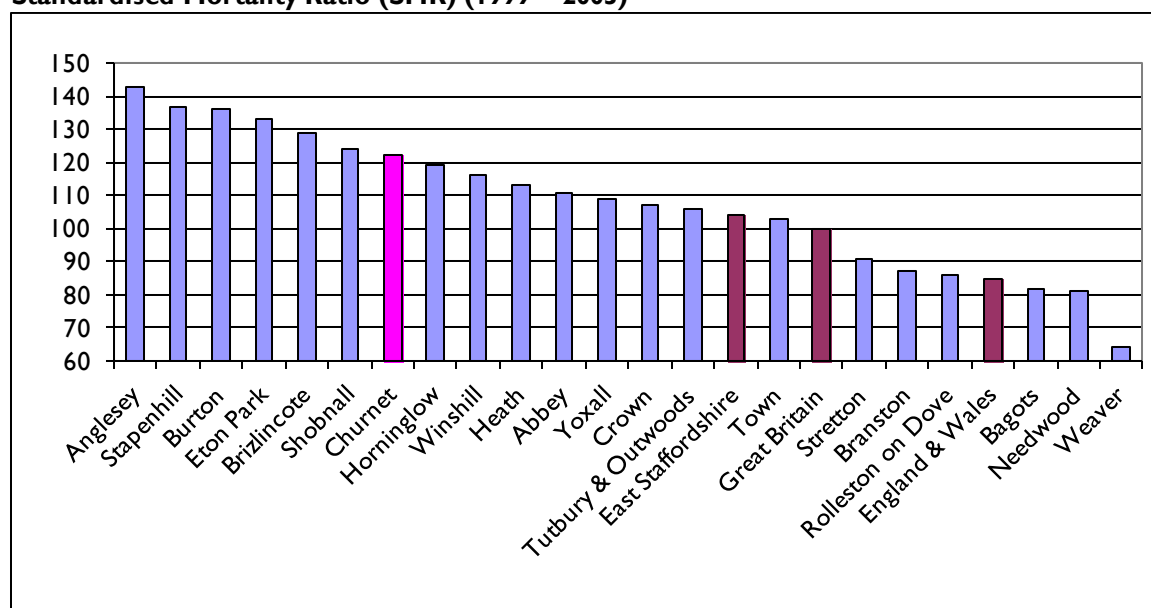
Source: Local Knowledge: Synthetic Health Indicators for Health Lifestyle Behaviours

## Average Life Expectancy (1999 – 2003)



Source: Local Knowledge; Life Expectancy at Birth

### Standardised Mortality Ratio (SMR) (1999 – 2003)



Source: Local Knowledge; Standardised Mortality Ratios

The Standardised Mortality Ratio compares overall mortality in a locality with that for the UK as a whole. The ratio expresses the number of deaths in a locality as a percentage of the hypothetical number that would have occurred if the local population had experienced the sex/age specific rates of the UK in that year. The lower the figure, the lower the relative mortality.

In the table below the Health Intelligence and Clinical Evidence Team, Staffordshire Public Health have summarised some of the key health indicators. Those shaded red are statistically worse than the England average and those shaded green are statistically better. The following measurements are statistically better for those living in Churnet:

- Percentage of births with a low birthweight (under 2,500 grams)
- Premature mortality from cancers (rate per 100,000 people aged under 75)
- Smoking prevalence - adults (Mosaic estimates)
- Percentage of adult population doing no exercise in the last month (Mosaic estimates).

### Summary of Key Health Indicators

	Churnet	East Staffs
Percentage of births with a low birthweight (under 2,500 grams) (2004/08)	1.3%	9.1%
Life expectancy at birth for males (years) (2004/08)	78.6	76.9
Life expectancy at birth for females (years) (2004/08)	82.3	81.1
All-age all cause mortality rate per 100,000 population (2004/08)	597	626
Premature mortality (rate per 100,000 population aged under 75) (2004/08)	245	306
Premature mortality from circulatory diseases (rate per 100,000 people aged under 75) (2004/08)	84	80
Premature mortality from cancers (rate per 100,000 people aged under 75) (2004/08)	71	113
Mental Illness Needs Index (MINI) (rate per 100,000 population) (2000)	292	350
Percentage of population with a self reported limiting long term illness (2001)	17%	17%
Smoking prevalence - adults (Mosaic estimates) (2009)	23%	25%
Obesity prevalence - adults (Mosaic estimates) (2009)	16%	17%
Percentage of adult population eating five or more portions of fruit or vegetables a day (Mosaic estimates) (2009)	24%	24%
Percentage of adult population doing no exercise in the last month (Mosaic estimates) (2009)	48%	51%

Source: Health Intelligence and Clinical Evidence Team, Staffordshire Public Health

Key points from the 2001 Census show that when compared to the East Staffordshire and England & Wales averages Churnet has:

- A higher proportion of residents with a limiting long-term illness than the Borough average
- A lower proportion of residents who described their health as 'Not Good'
- A lower proportion of residents who provide unpaid care

Key points from the Synthetic Health Indicators for Health Lifestyle Behaviours Survey show that when compared to the national averages Churnet is thought to have (based on a sample survey):

- A lower proportion of residents who binge drink or who smoke
- A higher proportion of residents who are obese
- A lower proportion of children that eat 3 or more portions of fruit and vegetables a day

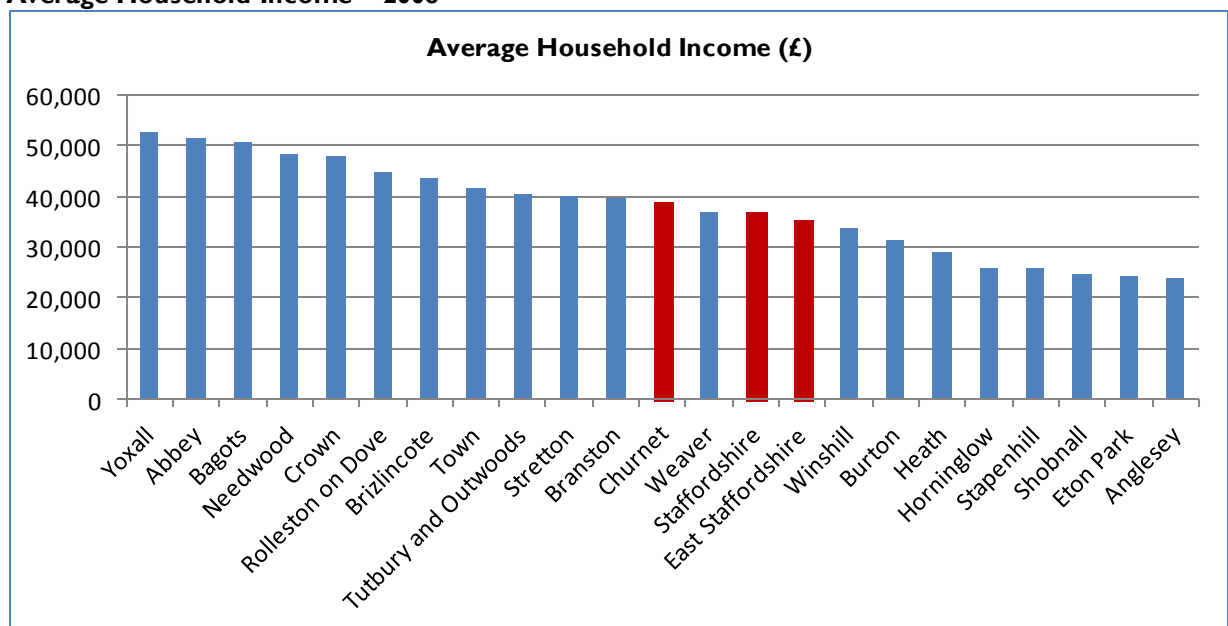
Key points from the 1999 – 2003 life expectancy and standardised mortality ratio data show that when compared to the national average Churnet has:

- A lower than average life expectancy
- A higher than average SMR

## Income

The average household income across East Staffordshire in 2008 was £35,500, which is slightly below the Staffordshire average of £36,800. However, across Churnet the average household income in 2008 was £38,800, which is above the Borough and County figures.

### Average Household Income – 2008



Source: Acxiom IncomeX

## DWP Benefit Claimants – Working Age Clients – May 2010

Proportion of resident population aged 16-64 claiming benefits			
%	Churnet	East Staffordshire	Great Britain
Total claimants	12.7	13.3	14.7
Job seekers	1.8	3	3.5
ESA and incapacity benefits	6.5	6	6.7
Lone parents	1.5	1.5	1.7
Carers	1.2	1.1	1.1
Others on income related benefits	0.0	0.5	0.5
Disabled	1.2	1	1
Bereaved	0.6	0.3	0.2

Source: DWP Benefit Data – Nomis

Key points from the income data show that when compared to East Staffordshire, Churnet has:

- An average household income of £38,800, which is above the East Staffordshire average (£35,500)
- A slightly lower proportion of total benefit claimants
- A lower proportion claiming Jobseekers Allowance but a similar proportion for all other benefits.

## Housing

At the time of the 2001 Census there were 959 household spaces with residents in Churnet. There was also an additional 46 household spaces without residents, making a total of 1,005 household spaces in Churnet in April 2001.

### Households – 2001 Census Findings - %

	Churnet	East Staffordshire	England & Wales
One person households	24.3	27.7	30.0
Pensioner living alone	12.7	14.0	14.4
Other all pensioner households	10.2	9.6	9.4
Contained dependent children	30.0	31.0	29.5
Lone parent households with dependent children	6.0	5.7	6.5
Owner occupied	70.4	75.8	68.9
Rented from Council	9.1	8.1	13.2
Rented from Housing Association or RSL	12.0	6.0	6.0
Private rented or lived rent free	8.6	10.2	11.9
Without central heating	12.2	15.3	8.5
Without sole use of bath, shower or toilet	0.0	0.3	0.5
Have no car or van	19.4	23.2	26.8
Have 2 or more cars or vans	33.9	32.6	29.4
Average household size (number)	2.4	2.4	2.4
Average number of rooms per household	5.6	5.7	5.3

Source: 2001 Census Area Statistics

Key points from the housing data show that when compared to East Staffordshire, households in Churnet are:

- Less likely to be single person and single pensioner households
- More likely to be all pensioner households
- Less likely to be households containing dependent children than the Borough average
- More likely to be lone parent households than the Borough average
- Less likely to be owner occupied than the Borough average
- More likely to be rented from the Council than the Borough average
- Far more likely to be rented from an RSL
- Less likely to be private rented/living rent free
- Less likely to be without central heating than the Borough average
- Less likely to have no car or van and more likely to have 2 or more cars or vans

#### Households – 2001 Census – Accommodation Type - %

	Churnet	East Staffs	England & Wales
Percentage living in a detached house	28.1	31.7	22.8
Percentage living in a semi-detached house	40.3	32.8	31.6
Percentage living in a terraced house	21.1	25.7	26.0
Percentage living in a flat or maisonette	10.1	9.4	19.2
Percentage living in a caravan or mobile home	0.0	0.4	0.4

Source: 2001 Census Area Statistics

Key points from the 2001 Census show that when compared to East Staffordshire, households in Churnet are:

- Less likely to be in a detached house than the Borough average
- More likely to be in a semi-detached house
- Less likely to be in a terraced house
- More likely to be in a flat or maisonette than the Borough average
- Less likely to be in a caravan or mobile home

### Private Sector House Condition Survey 2008

The 2008 House Condition Survey was distributed to a random sample of 1,250 private sector households and entailed full internal and external surveys plus supporting interviews with the occupying households. At the time of the survey there were 41,968 private dwellings, 38,849 of which were occupied (92.6%) and 3,119 (7.4%) were vacant. Of these 14,048 households (36.2%) are elderly and 12,464 households are economically vulnerable (32.1%). There is a mixed age profile with 16,596 dwellings (39.5%) constructed pre-1945 and 11,434 dwellings (27.2%) constructed pre-1919.

Housing conditions in the Borough are better than the national average for private housing; however, housing condition problems remain significant:

- 13,445 dwellings (32.0%) are non-decent
- 8,137 dwellings (19.4%) exhibit Category I hazards

	Category I Hazards	Non-decent Homes	Decent homes Energy Failure Rates	Fuel Poverty
Burton & Horninglow	30.3	50.3	25.9	39.2
Inner Burton (Anglesey, Eton Park and Shobnall)	29.9	39.9	18.8	41.7
Rural North (Abbey, Churnet & Weaver)	23.9	31.3	22.5	33.6
Rural South (Bagots, Crown, Needwood, Rolleston on Dove, Tutbury & Outwoods, Yoxall)	21.0	39.5	26.9	44.6
Winshill & Stapenhill	14.5	23.5	12.3	32.9
Uttoxeter (Heath & Town)	12.0	22.8	9.6	27.2
Outer Burton (Branston, Brizlincote and Stretton)	8.4	18.5	11.1	27.2
Borough Average	19.4	32.0	18.1	35.5

### Category I hazards

These include falls on steps/stairs, excess cold, dampness/mould and crowding/space. Category I hazards are not evenly distributed across the Borough but are higher across the Inner Burton and Burton/Horninglow areas

### Non-decent homes

The most common reasons for failing the Decent Homes Standard relate to energy efficiency and Category I hazards. Patterns of non-decent housing are similar to those for Category I hazards with higher rates for the Inner Burton and Burton/Horninglow areas. Rates of non decency are also higher in the Rural South. Poor housing conditions within the Borough are associated with households in social and economic disadvantage. A significant proportion of households living in non-decent homes are made up of the elderly (36.2%) and the economically vulnerable (48.8%).

### Home energy efficiency

The home energy efficiency rates in private housing in the Borough are above the national average. East Staffordshire has an average SAP Rating of 56 compared to an average of 47 for all private housing in England. 7,585 dwellings fail the Decent Homes energy requirements representing 18.1% of all private dwellings.

### Fuel Poverty

13,805 households in the Borough (35.5%) are in Fuel Poverty. The highest rates of fuel poverty are associated with Inner Burton and the Rural South. Rates of fuel poverty are also higher for households in pre-war housing, terraced housing and converted flats. Households most affected include young single households, single parent families and the elderly.

Key points from the 2008 House Condition Survey show that when compared to the East Staffordshire average, private housing stock in the Rural North is:

- More likely to exhibit Category I Hazards
- Less likely to be non-decent
- More likely to fail the Decent Homes Energy Rating
- Less likely to be in Fuel Poverty

### Register of Electors 2010

The table below shows a count of the number of properties at the time of the 2010 Register of Electors. It shows a total of 1,190 properties in Churnet ward, which is an increase of 18.4% on the 2001 Census figure. This is above the East Staffordshire increase of 10.4%. There are obviously differences in the way the information is produced but it gives an indication of the change in the number of properties during this period.



Electoral Area	Properties	% of Total	Void Properties	Void % of Props
AT - Denstone	429	36%	26	6%
AU - Rocester	761	64%	42	6%
<b>Churnet</b>	1,190	2%	68	6%
East Staffordshire	49,048	100%	3,385	7%

Source: Register of Electors 2010

#### Fire Service Arson Returns 2008-2009

Churnet	%	Number
Arson incidents	3.0	6
Malicious false Alarms: Attended	0.0	0
Malicious false Alarms: Not attended	4.3	1
Primary fires	42.9	3
Accidental dwelling fires	10.3	4
Deliberate vehicle fires	0.0	0
Deliberate other fires	0.0	0
Deliberate grass fires	0.0	0

Source: Staffordshire Fire Service

## Index of Local Deprivation 2010

The Indices of Deprivation 2010 (ID 2010) is a measure of multiple deprivation at a small area level. The small geographical areas the ID 2010 is based upon are called Lower Layer Super Output Areas (LSOA's) and each account for between 1,000 and 3,000 people. The purpose of basing the Indices upon LSOA's is to pinpoint small areas of deprivation that may otherwise be hidden within larger wards. The ID 2010 consists of an overall measure of deprivation and seven specific aspects – Income, Employment, Health and Disability, Education, Skills and Training, Barriers to Housing and Services, Living Environment and also Crime.

There are 32,482 LSOA's in England and two of these are located within Churnet ward. Below is a summary of the key points arising from the ID 2010 for Churnet's LSOA's. If the LSOAs fall within the top 10% or top 20% most deprived they are considered here to be deprived:

- **Overall Deprivation:** Churnet's two LSOAs have both seen an improvement in their rankings since 2007. Neither is deprived.
- **Income Deprivation:** Neither LSOA experiences income deprivation and one falls within the top 30% least deprived.
- **Employment Deprivation:** Neither LSOA experiences employment deprivation and they fall within the top 50% least deprived.
- **Health & Disability Deprivation** Neither LSOA experiences health & disability deprivation.
- **Education, skills and training deprivation:** Churnet is divided in terms of education, skills and training. One LSOA is deprived and falls within the **top 20% most deprived** LSOAs in England. The other LSOA is not deprived and in fact falls within the top 20% least deprived.
- **Barriers to housing and services deprivation:** Neither LSOA is deprived in terms of barriers to housing and services and in fact one falls within the top 10% least deprived LSOAs in England.
- **Crime Deprivation** Neither LSOA is deprived in terms of crime and in fact one LSOA falls

within the top 10% least deprived LSOAs in England.

- **Living environment deprivation:** Churnet is not deprived in terms of its living environment.

Churnet ward does not exhibit deprivation according to the majority of the measurements. However there is evidence of Education, Skills and Training deprivation in one of the LSOA's. Churnet is notable in that one of its LSOAs is more deprived than the other.

## Place Survey 2008 - 2009

All local authorities are required to undertake a Place Survey containing a standard set of questions which are designed to capture local people's views, experiences and perceptions. The aim is to use the findings to ensure that improvements for an area reflect local views and preferences. A random sample of 3,000 residents (aged 18 and over) were selected and 1,134 responses were received – a response rate of 38%. The findings set out below were calculated as a proportion of respondents who answered each question and exclude those who did not reply. The tables include a column for ranking within East Staffordshire, with a ranking of 1 being the most satisfied and 21 being the least satisfied.

### The Local Area

Respondents were asked to select five factors they felt were most important in making somewhere a good place to live and they were then asked to select the five that were most in need of improvement in their local area. The results for East Staffordshire as a whole are set out below:

Most important	Most in need of improvement
The level of crime (65%)	Activities for teenagers (47%)
Clean streets (45%)	Level of traffic congestion (37%)
Health services (41%)	Road and pavement repairs (31%)
Affordable decent housing (36%)	The level of crime (26%)
Education provision (28%)	Public transport (25%)

Only one factor (the level of crime) is thought to be both important and in need of improvement which suggest the Council and its partners are performing well in the areas considered to be the most important to the local residents.

Respondents were asked how satisfied or dissatisfied they are with their local area as a place to live. In Churnet 82% of respondents were very/fairly satisfied, which is above the Borough average (79%). The survey found that older respondents were more likely to be satisfied with their local area than younger respondents, which fits with the age structure of the ward. Churnet has a higher proportion of residents of pensionable age than the Borough average.

Respondents were asked how satisfied or dissatisfied they are with their home as a place to live. In Churnet 88% of respondents were very/fairly satisfied which is below the Borough average (90%). The survey found that home owners were more likely to be satisfied with their home than those who were renting. Churnet has a lower proportion of home owners than the Borough average (2001 Census).

Respondents were asked how strongly they feel they belong to their immediate neighbourhood. In Churnet 50% of respondents feel they very/fairly strongly belong which is below the Borough average (61%). The survey found that older respondents (65+) were more likely to feel they belong to their immediate neighbourhood and those who rent privately were less likely to feel so.

% of respondents who are:	Churnet	East Staffordshire	Comparison with East Staffordshire	Rank within East Staffordshire	England Average	Comparison with England
Satisfied with local area	82	79	↑	12	80	↑
Satisfied with home as a place to live	88	90	↓	14	N/A	N/A
Feel they belong to immediate neighbourhood	50	61	↓	16	59	↓

### Local Public Services

This section covers perceptions of and satisfaction with local public services. Generally older respondents were more positive than younger respondents. There are a wide range of factors that may affect how people feel about their local authority and its services, such as demographic characteristics, how informed people are, and views on participation and local decision making.

In Churnet the respondents are more likely to agree that local public services are:

- Working to make the area safer
- Working to make the area cleaner and greener
- Acting on the concerns of local residents
- Treating all types of people fairly – Churnet has the highest ranking for this.

However, they are less likely to agree that local public services are:

- Promoting the interests of local residents

% of respondents who think local public services are:	Churnet	East Staffordshire	Comparison with East Staffordshire	Rank within East Staffordshire
Working to make the area safer	73	67	↑	5 (joint)
Working to make the area cleaner and greener	83	71	↑	4
Promote the interests of local residents	40	43	↓	13
Act on the concerns of local residents	57	47	↑	4
Treat all types of people fairly	92	72	↑	1

Respondents were asked how satisfied or dissatisfied they are with a number of different local services. In Churnet the satisfaction levels are above the Borough average for all services. In fact, Churnet has the highest satisfaction levels of all the wards for local dentists. Again older people were more positive than younger people and females were more satisfied than males.

% of respondents who are satisfied with:	Churnet	East Staffordshire	Comparison with East Staffordshire	Rank within East Staffordshire
Staffordshire Police	65	62	↑	8
Staffordshire Fire & Rescue	87	84	↑	5 (joint)
Your GP	92	85	↑	3
Local hospital	85	78	↑	3 (joint)
Local dentist	92	72	↑	1

Respondents were asked if they had used a number of services provided or supported by the Council in the last 12 months. Compared to the Borough average, fewer Churnet respondents had used sport facilities, museums, theatres and parks.

% of respondents who have used the service in last 12 mths:	Churnet	East Staffordshire	Comparison with East Staffordshire	Rank within East Staffordshire
Local tips/Household WRC	96	90	↑	4 (joint)
Local Transport Information	60	57	↑	8 (joint)
Bus	60	57	↑	7
Sport	48	57	↓	18
Libraries	67	59	↑	4 (joint)
Museums	18	22	↓	13
Theatres	24	30	↓	14
Parks	81	87	↓	17 (joint)

Respondents were asked to state the extent to which they agree or disagree that the County Council and Borough Council provide value for money. Churnet respondents were more likely to agree with the statements than the Borough average.

% of respondents who think:	Churnet	East Staffordshire	Comparison with East Staffordshire	Rank within East Staffordshire
East Staffordshire Borough Council provides value for money	42	31	↑	3
Staffordshire County Council provides value for money	35	30	↑	6

Respondents were asked how satisfied they are with the way the County Council and Borough Council run things. Churnet respondents were less likely to be satisfied with how the authorities run things than the Borough average.

% of respondents who are satisfied with the way:	Churnet	East Staffordshire	Comparison with East Staffordshire	Rank within East Staffordshire
East Staffordshire Borough Council runs things	35	43	↓	16 (joint)
Staffordshire County Council runs things	35	41	↓	15 (joint)

### Local Decision Making

The Government aims to build communities where individuals are empowered to make a difference both to their own lives and to the area in which they live. A key indicator of this is the extent to which people feel able to influence decisions affecting their local area. Respondents were asked if they feel they can influence decisions in their locality. Churnet respondents are more likely to feel they can than the Borough average.

% of respondents who feel:	Churnet	East Staffordshire	Comparison with East Staffordshire	Rank within East Staffordshire	England Average	Comparison with England
They can influence decisions in their locality	44	26	↑	2	29	↑

## Respect and Consideration

Compared to the Borough average Churnet respondents are more likely to score positively in all the areas:

- Parents take responsibility for the behaviour of their children – the rationale behind this question is to focus local authorities and their partners on supporting effective parenting and to take action to ensure parents are held responsible where their children behave in an unacceptable manner.
- People from different backgrounds get on well together – this measure is widely recognised as a key indicator of a cohesive society. The Local Government White Paper sets out the aim of creating strong and cohesive communities.
- People do not treat each other with respect and consideration – the rationale behind this question is to encourage local authorities and their partners to take action to promote strong communities with shared values where community members treat each other with respect and consideration.
- They have been treated with respect and consideration by local public services – local authorities are encouraged to consider this indicator in terms of narrowing gaps between perceptions for different group(s).

% of respondents who feel:	Churnet	East Staffordshire	Comparison with East Staffordshire	Rank within East Staffordshire	England Average	Comparison with England
Parents take responsibility for the behaviour of their children	33	30	↑	10	30	↑
People from different backgrounds get on well together	85	71	↑	3	76	↑
People do not treat each other with respect & consideration	28	29	↑	11	31	↑
They have been treated with respect & consideration by local public services	83	71	↑	3	72	↑

## Community Safety

Respondents were asked how safe they feel when outside in their local area during the day and after dark. Across the Borough those who were dissatisfied with their local area as a place to live were more likely to feel unsafe.

Churnet respondents were more likely to feel safe after dark and during the day than the Borough average.

% of respondents who feel:	Churnet	East Staffordshire	Comparison with East Staffordshire	Rank within East Staffordshire
Safe after dark	74	54	↑	6
Safe during the day	97	90	↑	5 (joint)

## Anti-social Behaviour

Respondents were asked to think about their local area and to say whether each of a number of different types of antisocial behaviour was a very/fairly big problem. Local authorities are the key partner in tackling ASB and have statutory duties to enforce ASB legislation. Churnet scores negatively compared to the Borough average for all the following aspects of anti-social behaviour:

- Noisy neighbours or loud parties
- Teenagers hanging around the streets
- Rubbish or litter lying around
- People being drunk or rowdy in public

However the respondents found no problems (0%) with abandoned or burnt out cars (ranked first).

% of respondents who feel the following ASB is a problem:	Churnet	East Staffordshire	Comparison with East Staffordshire	Rank within East Staffordshire	England Average	Comparison with England
Noisy neighbours or loud parties	18	13	↓	16	N/A	N/A
Teenagers hanging around the streets	60	41	↓	17 (joint)	N/A	N/A
Rubbish or litter lying around	32	27	↓	15	N/A	N/A
Vandalism/graffiti to property/vehicles	26	26	→	13	N/A	N/A
People using or dealing drugs	28	28	→	12	31	↑
People being drunk or rowdy in public	32	24	↓	15 (joint)	29	↓
Abandoned or burnt out cars	0	5	↑	1 (joint)	N/A	N/A

## Confidence in Police

Respondents were asked whether they agree or disagree that the police and other local public services seek people's views about dealing with ASB and crime in their local area. This measure is being employed as a proxy to measure confidence in local agencies to tackle the community safety issues that matter to local people. Churnet respondents were more likely to agree with this statement (36%) than the Borough average (26%).

Respondents were then asked whether they agree or disagree that the police and other local public services are successfully dealing with ASB and crime in their local area. Churnet respondents were more likely to agree with this statement (30%) than the Borough average (26%).

% of respondents who agree the police & other local services are:	Churnet	East Staffordshire	Comparison with East Staffordshire	Rank within East Staffordshire	England Average	Comparison with England
Seeking people's views about dealing with ASB & crime	36	26	↑	3	25	↑
Successfully dealing with ASB & crime	30	26	↑	8	26	↑

## Additional Questions

East Staffordshire Borough Council added additional questions to the Place Survey about the local bus services. Older respondents were more likely to be satisfied with each element than younger respondents as were non disabled respondents compared with disabled respondents.

Churnet scores above the Borough average for satisfaction in terms of all aspects of the local bus service. In fact it has the highest score of all the wards for the state of the bus stops.

<b>% of respondents who are satisfied with:</b>	<b>Churnet</b>	<b>East Staffordshire</b>	<b>Comparison with East Staffordshire</b>	<b>Rank within East Staffordshire</b>
The frequency of buses	76	61	↑	5
The number of bus stops	81	76	↑	11 (joint)
The state of the bus stops	90	71	↑	1
Whether buses arrive on time	64	59	↑	6
How easy buses are to get on & off	84	73	↑	3 (joint)
The bus service overall	71	60	↑	5

Source: East Staffordshire Borough Council Place Survey 2008/09 Snap SurveyShop

**Please ensure you quote the following source and copyright if using Census data:**

**Source:** 2001 Census Area Statistics

**Copyright:** Census output remains Crown copyright. Census output is Crown copyright and is reproduced with the permission of the Controller of HMSO and the Queen's Printer for Scotland