

# Mid 2009 Population Estimates

Mid-2009 population estimates were published on 24 June 2010, and are based on the new methods of estimating population statistics introduced by the Office for National Statistics (ONS).

The source of the data throughout this report is the Office for National Statistics. Figures have been rounded to the nearest 100.

## Definition of resident population:

The estimated resident population of an area includes all people who usually live there, whatever their nationality. Members of UK and non-UK armed forces stationed in the UK are included and UK forces stationed outside the UK are excluded. Students are taken to be resident at their term time address.

The methodology used to update the population estimates accounts for flows of long-term international migrants. A long-term international migrant is defined as somebody who changes his or her country of usual residence for a period of at least one year. They do not include people who come to or leave the UK for less than a year. These are referred to as short-term migrants.

## Population

The population is increasing. According to ONS estimates the UK's population in 2009 has grown to 61.8 million, an increase of 0.6% on the 2008 figure. East Staffordshire's population is increasing in line with this.

The mid 2009 population estimate for East Staffordshire is 108,800. This represents an increase of 600 residents or 0.5% on the revised 2008 estimate of 108,200.

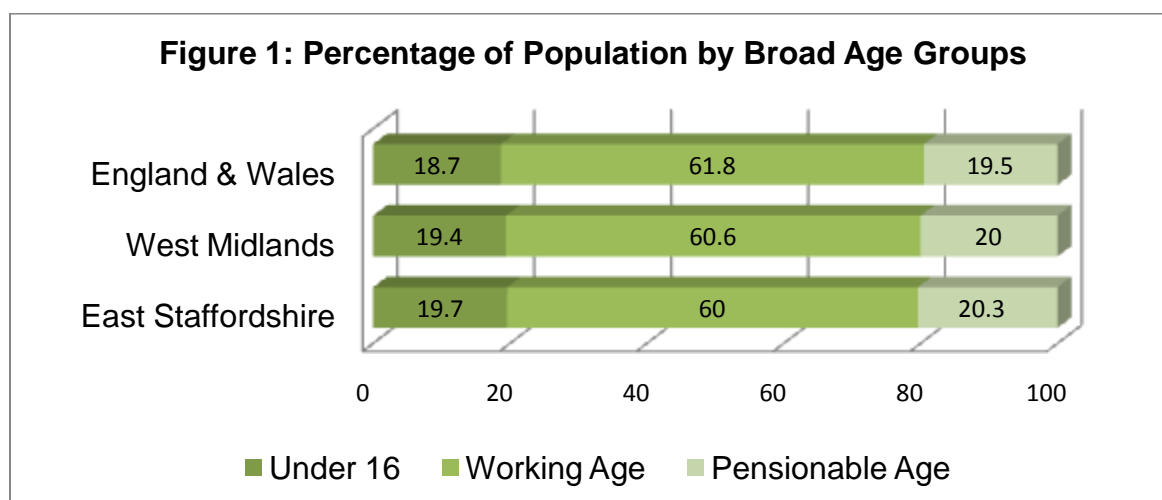
	<b>Males</b>	<b>Females</b>	<b>Persons</b>
<b>East Staffordshire</b>	53,700 (49.4%)	55,100 (50.6%)	108,800
<b>West Midlands</b>	2,671,100 (49.2%)	2,760,000 (50.8%)	5,431,100
<b>England &amp; Wales</b>	26,980,100 (49.2%)	27,828,900 (50.8%)	54,809,100

## The 2009 population of East Staffordshire:

- has increased by 600 (0.51%) since last year
- has increased by 3,200 (2.99%) over the last 7 years
- has a median age of 41.4 years<sup>1</sup>.
- has the mode quinary age group of 40-44<sup>2</sup>.
- is split 49.4% male to 50.6% female - this is very similar to the regional and national gender divides.
- has a population density of 281 persons per square kilometer
- has experienced turnover of 81 people per 1,000 population since last year
- is ranked 204th<sup>3</sup> for growth (%) in England and Wales mid-04 to mid-09
- is ranked 12th<sup>4</sup> for growth (%) in West Midlands mid-04 to mid-09

<b>Table 2: East Staffordshire's population by broad age group (figures &amp; %)</b>			
	<b>Children (under 16)</b>	<b>Working age (16 to 59f/64m)</b>	<b>Pensionable age (60f/65m and over)</b>
<b>Males</b>	10,900 (20.3%)	34,700 (64.6%)	8,100 (15.1%)
<b>Females</b>	10,500 (19.1%)	30,500 (55.5%)	14,000 (25.5%)
<b>Persons</b>	21,400 (19.7%)	65,200 (60.0%)	22,100 (20.3%)

Children represent one in every five of East Staffordshire's residents (19.7%) in 2009. This is above the regional and national averages, as the graph below illustrates. However, East Staffordshire also has a higher proportion of residents of pensionable age (20.3%) compared to the regional and national figures. This leaves a slightly lower proportion in the Borough of those of working age (60.0%).



<sup>1</sup> Median is the midpoint of the range numbers that are arranged in order of value - the median can be a good way to determine an approximate average, especially when dealing with a set of numbers that could otherwise be skewed by outliers.

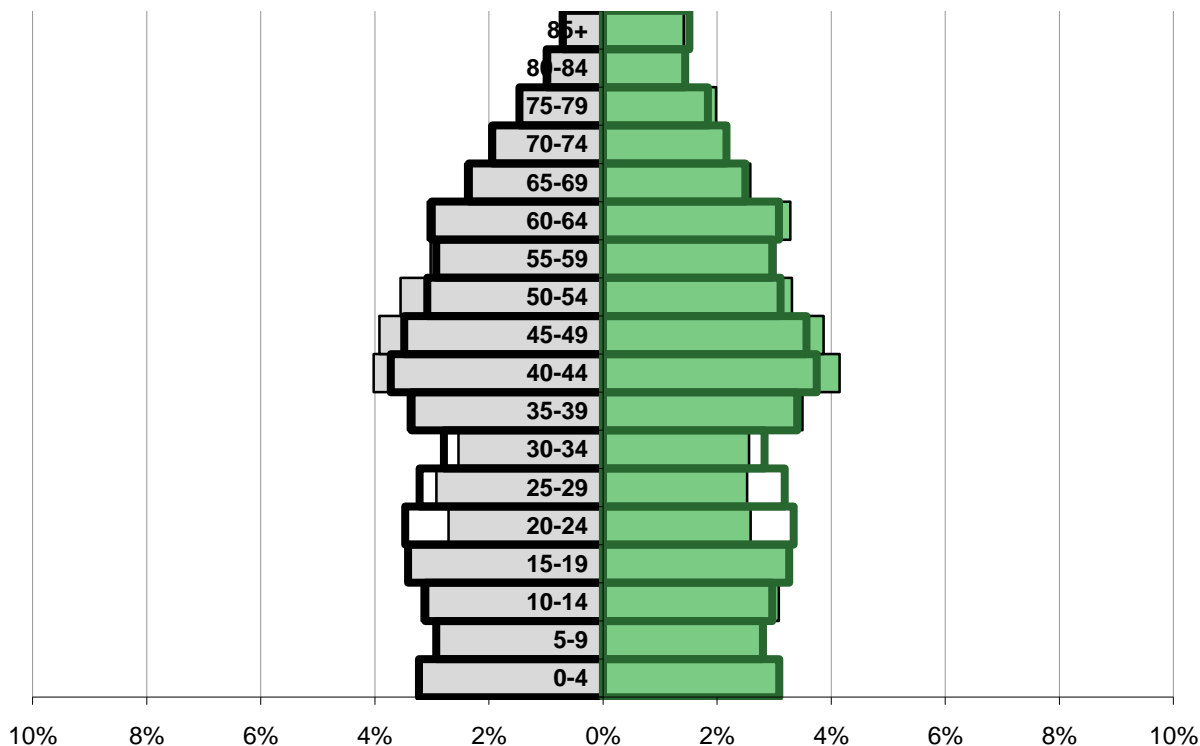
<sup>2</sup> Mode is the most frequently occurring term in a set of numbers.

<sup>3</sup> Ranking out of 376 local/unitary authorities, where rank 1 is the highest and rank 376 the lowest.

<sup>4</sup> Ranking out of 34 local/unitary authorities, where rank 1 is the highest and rank 34 the lowest.

The pyramid chart below shows the population of East Staffordshire in quinary (five year) age groups. Each age group is shown as a percentage of the total 2009 population. The left side of the pyramid represents the male residents and the right side represents the female population. The bold outline represents the West Midlands population. As the pyramid shows the Borough's population is under-represented in the 20 to 34 age groups and over-represented in the 40 to 54 age groups compared to the West Midlands population.

**Figure 2: East Staffordshire's 2009 Population by Quinary Age Groups - %**

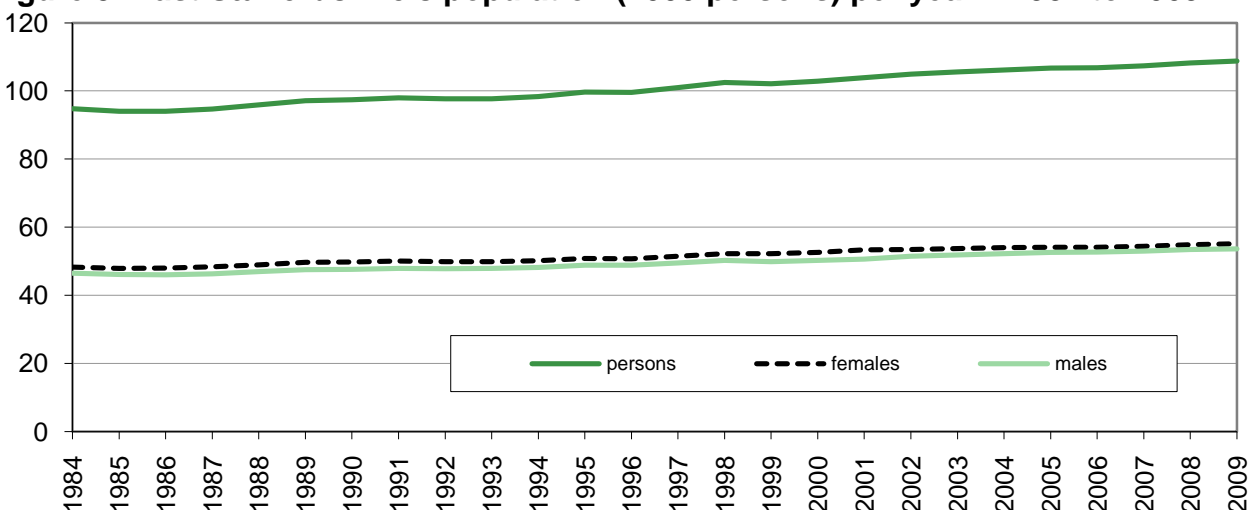


<b>Table 3: East Staffordshire's 2009 Population by Quinary Age Groups</b>			
	<b>Males</b>	<b>Females</b>	<b>Persons</b>
<b>0-4</b>	3,500	3,300	6,800
<b>5-9</b>	3,200	3,100	6,300
<b>10-14</b>	3,500	3,400	6,800
<b>15-19</b>	3,700	3,500	7,300
<b>20-24</b>	2,900	2,800	5,800
<b>25-29</b>	3,200	2,700	5,900
<b>30-34</b>	2,800	2,800	5,500
<b>35-39</b>	3,700	3,800	7,500

<b>40-44</b>	4,400	4,500	8,900
<b>45-49</b>	4,300	4,200	8,500
<b>50-54</b>	3,900	3,600	7,500
<b>55-59</b>	3,300	3,300	6,600
<b>60-64</b>	3,300	3,600	6,900
<b>65-69</b>	2,600	2,800	5,400
<b>70-74</b>	2,200	2,400	4,500
<b>75-79</b>	1,600	2,200	3,700
<b>80-84</b>	1,000	1,600	2,600
<b>85+</b>	700	1,500	2,300
<b>TOTAL</b>	53,700	55,100	108,800
<b>Median</b>	<b>40.5</b>	<b>42.4</b>	<b>41.4</b>

The chart below shows the Borough's population (by gender) over the past 25 years. The number of people living in East Staffordshire's during this time has increased by 14.7% from 94,800 in 1984 to 108,800 in 2009. Females have slightly outnumbered males throughout the whole period.

**Figure 3: East Staffordshire's population (1000 persons) per year – 1984 to 2009**



### Ageing Population

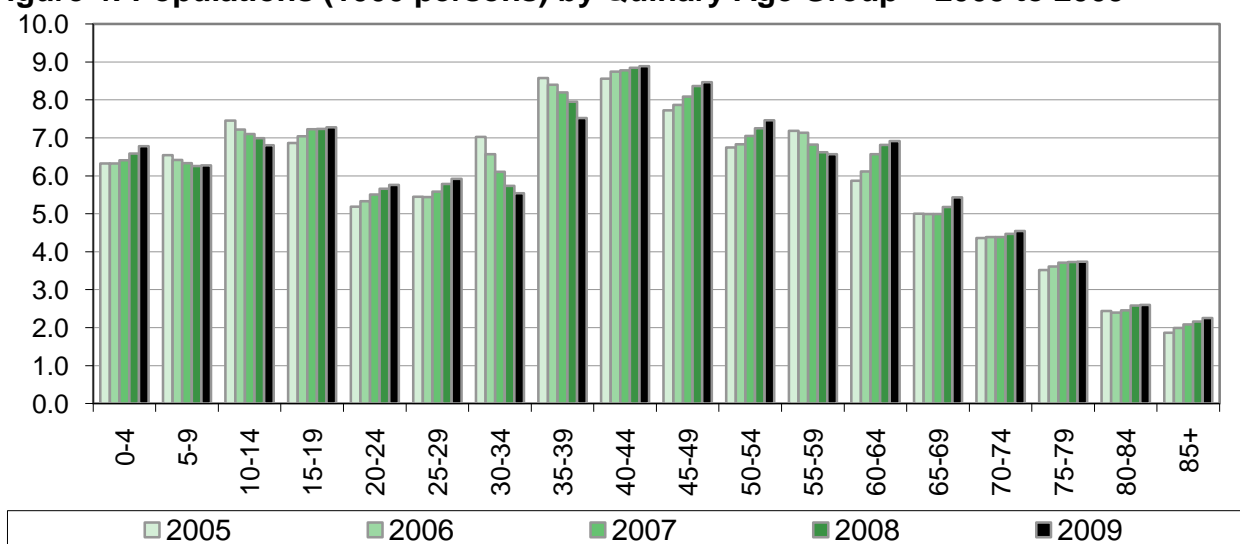
It is commonly stated that we have an ageing population. The number of people aged 85 and over living in the UK reached 1.4 million in mid-2009, accounting for more than 2.2 per cent of the total population. In 1981 this age group accounted for just 1.1% of the population. East Staffordshire follows a similar pattern. The number of people aged 85 and over reached 2,300 in mid 2009, accounting for 2.1 % of the total population.

The gender difference in the population aged 85 and over has decreased over the years. In mid-2009 men accounted for 32% of the UK population aged 85 and over, compared with just over 23% in mid-1981. East Staffordshire's elderly male population is in line with this UK average and also accounted for 32% of those aged 85 and over in 2009.

<b>Table 4: East Staffordshire's Elderly Population</b>		
	<b>Aged 85+</b>	<b>% of total population</b>
Males	700	1.3
Females	1,500	2.7
Persons	2,300	2.1

The figure below shows the local population in 2005 through to 2009 by quinary age groups and illustrates that with the exception of the 55 to 59 age group there has been an increase in every quinary age group in the 40+ years bracket in 2009.

**Figure 4: Populations (1000 persons) by Quinary Age Group – 2005 to 2009**



Natural change (the difference between births and deaths) accounted for 87% of the Borough's population growth between 2008 and 2009, which is significantly higher than the UK figure of 55%. Net migration and other changes accounted for 13% of the Borough's population growth compared to 45% of the UK's growth.

**Source: Office for National Statistics**