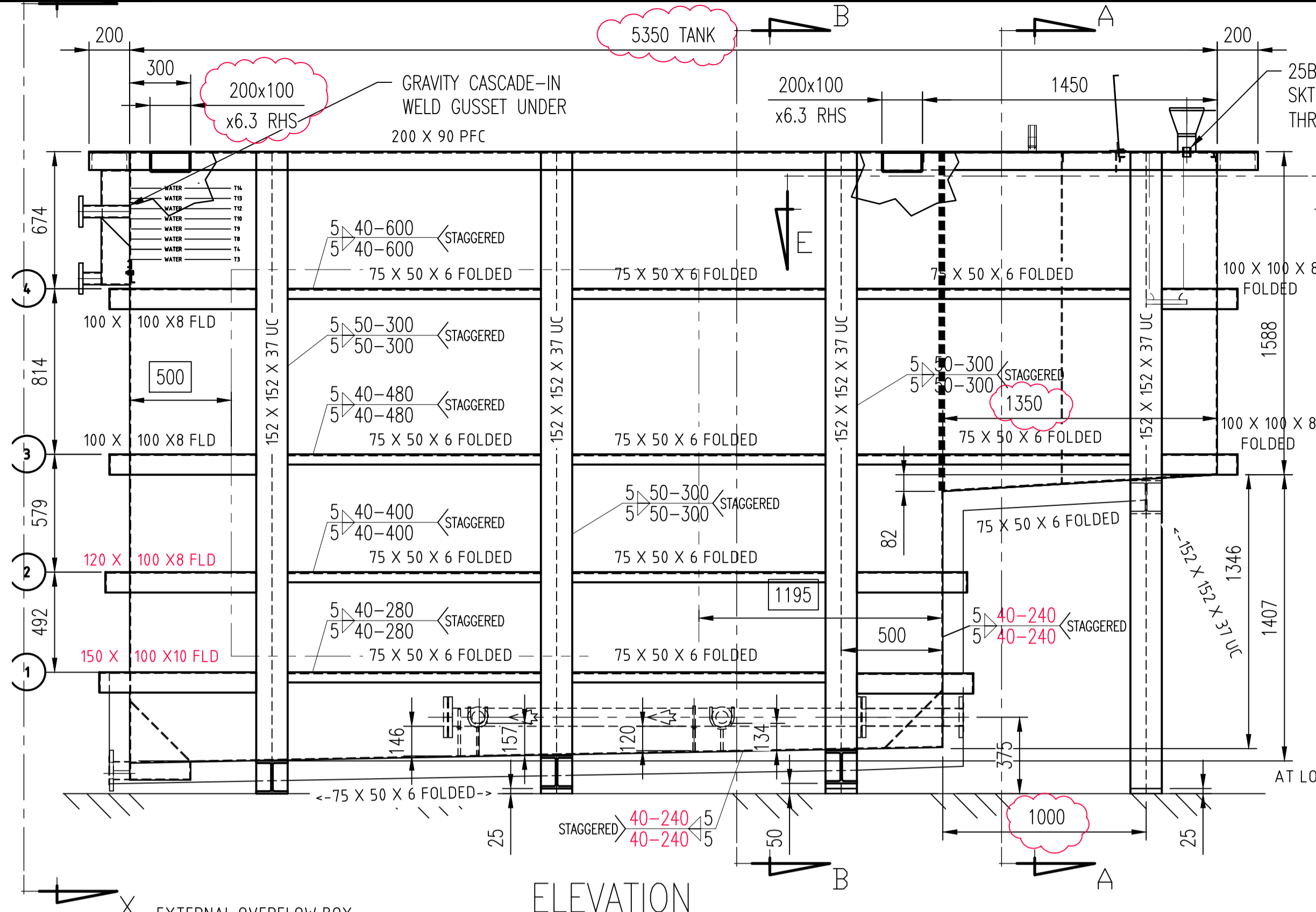
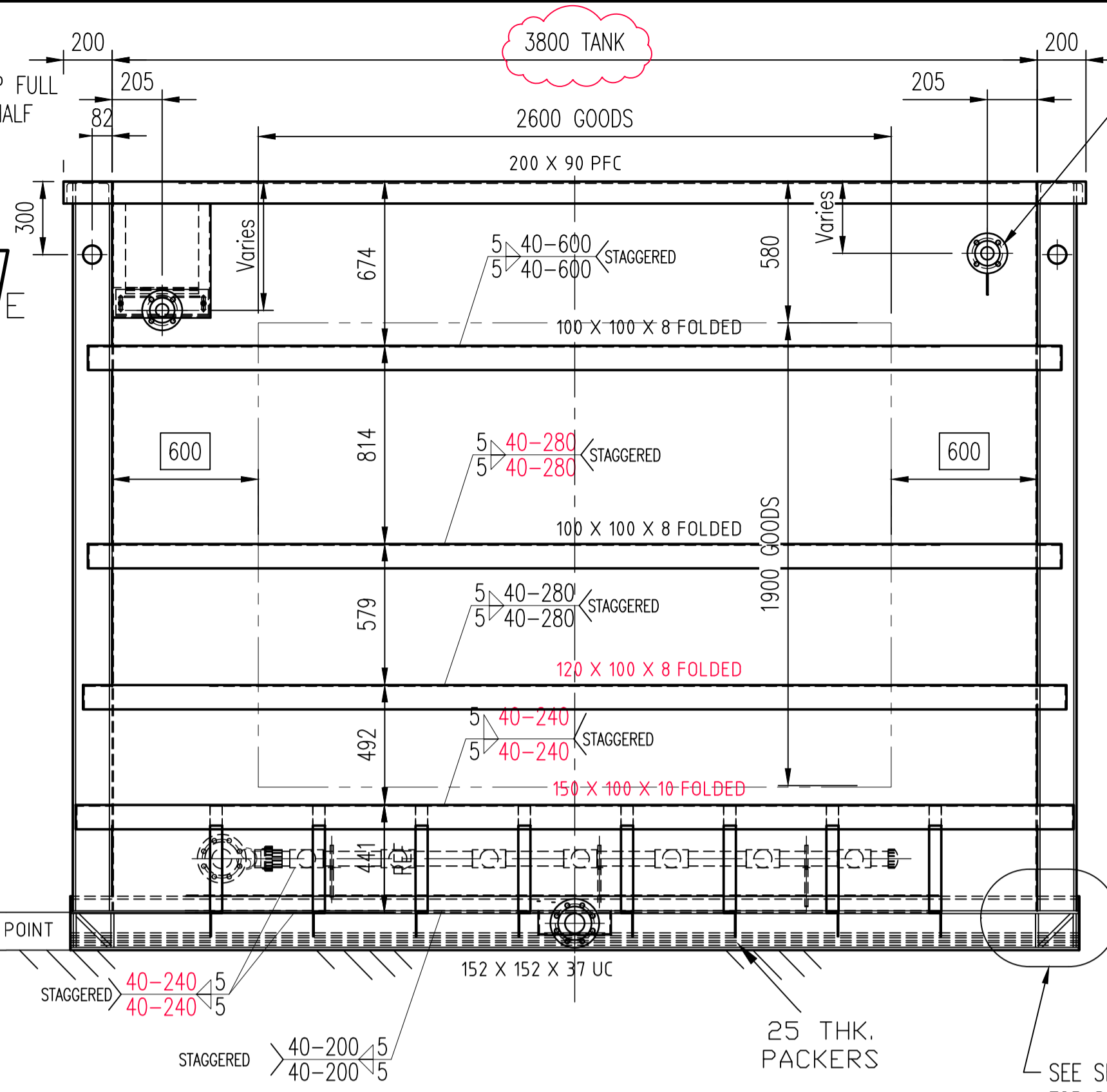


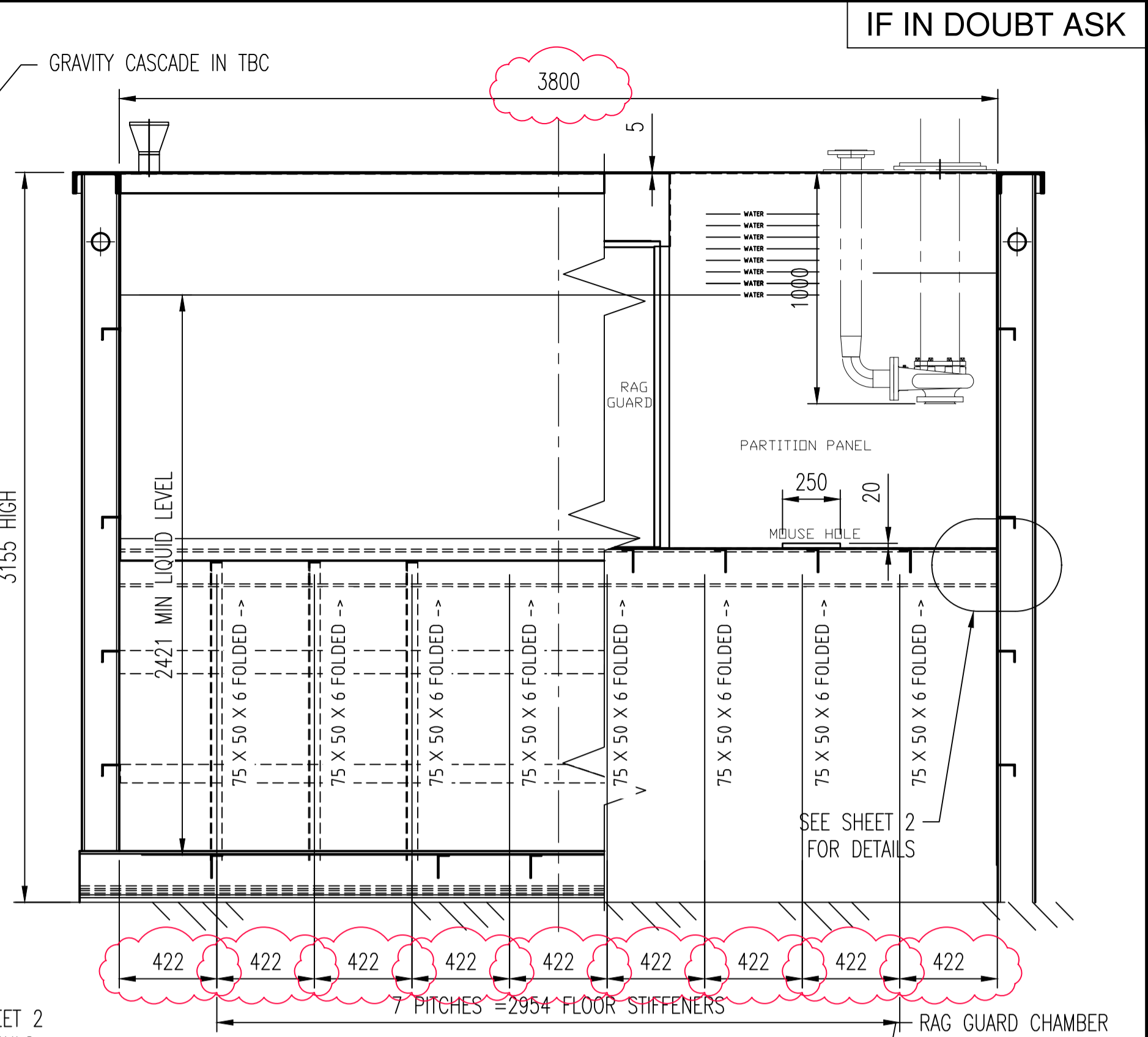
IF IN DOUBT ASK



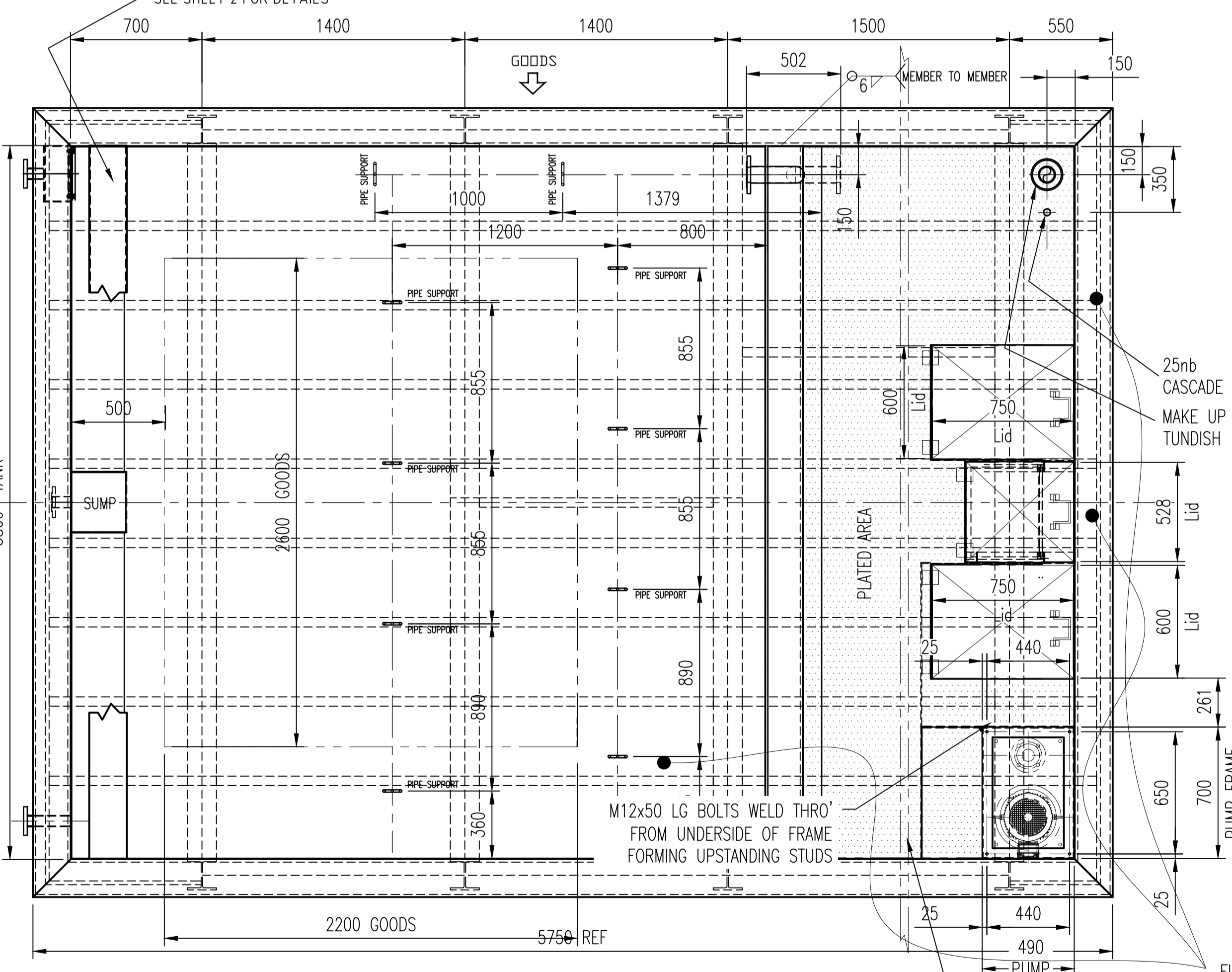
ELEVATION



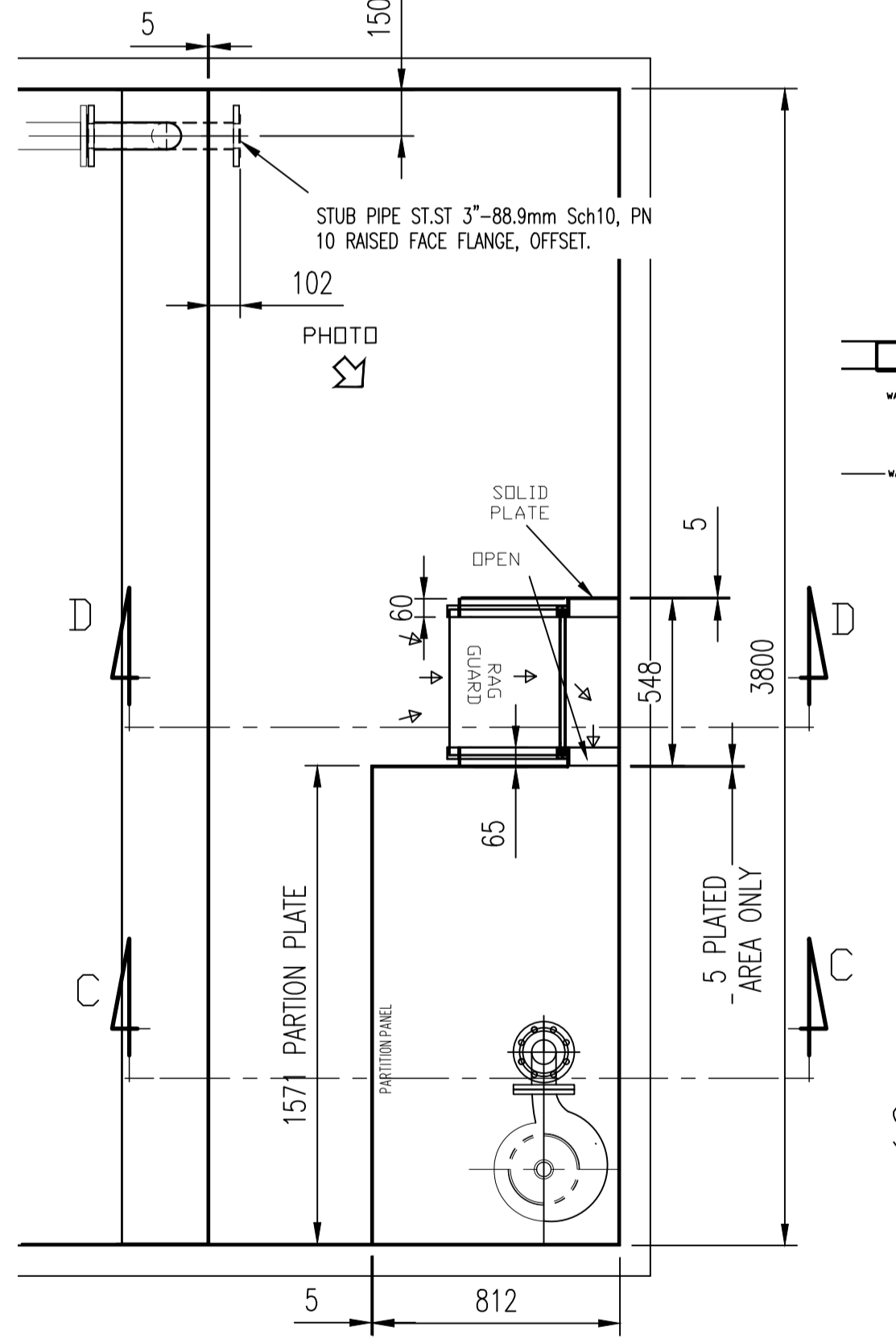
END ELEVATION ON 'X'



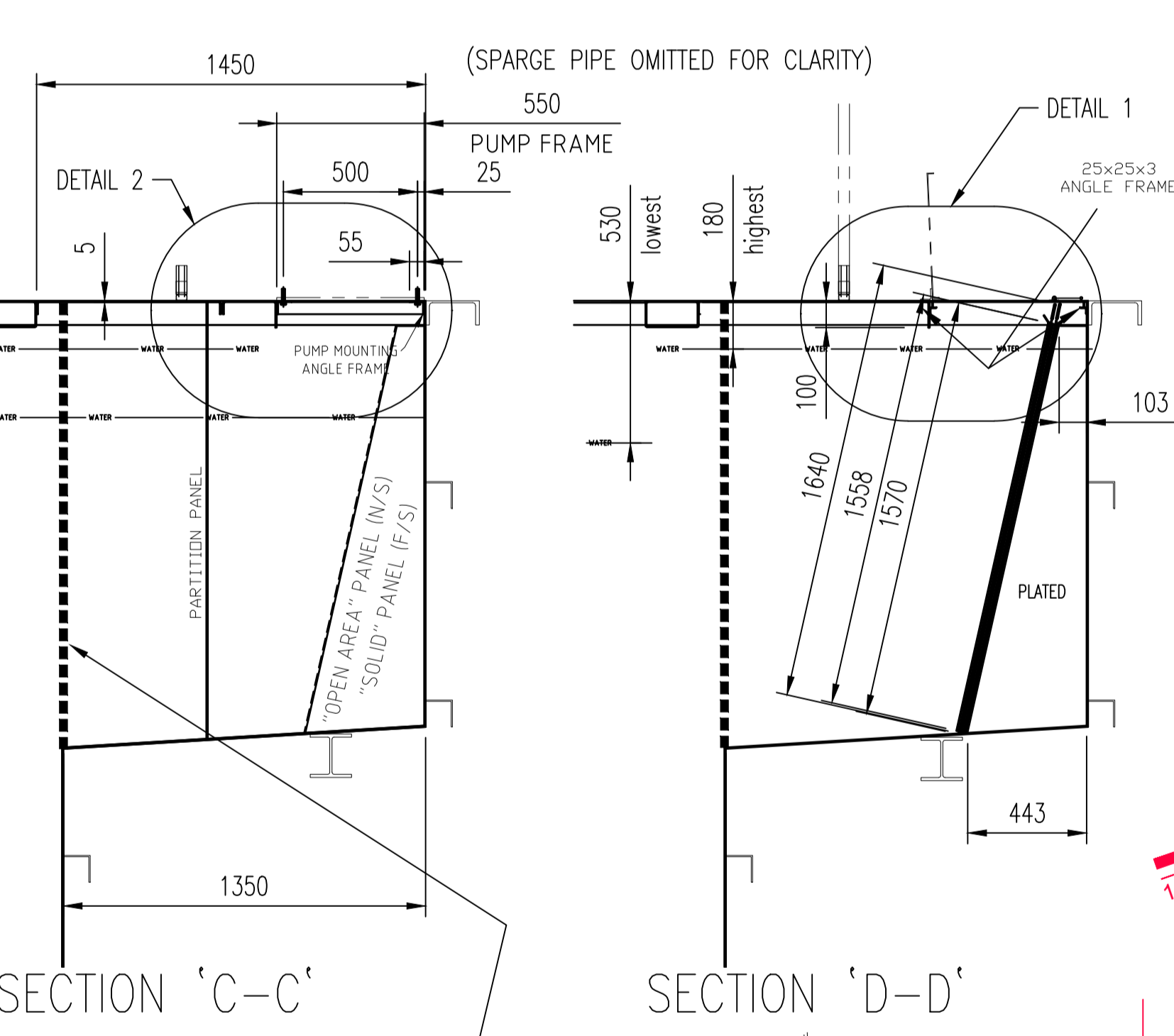
HALF SECTION B-B HALF SECTION A-A



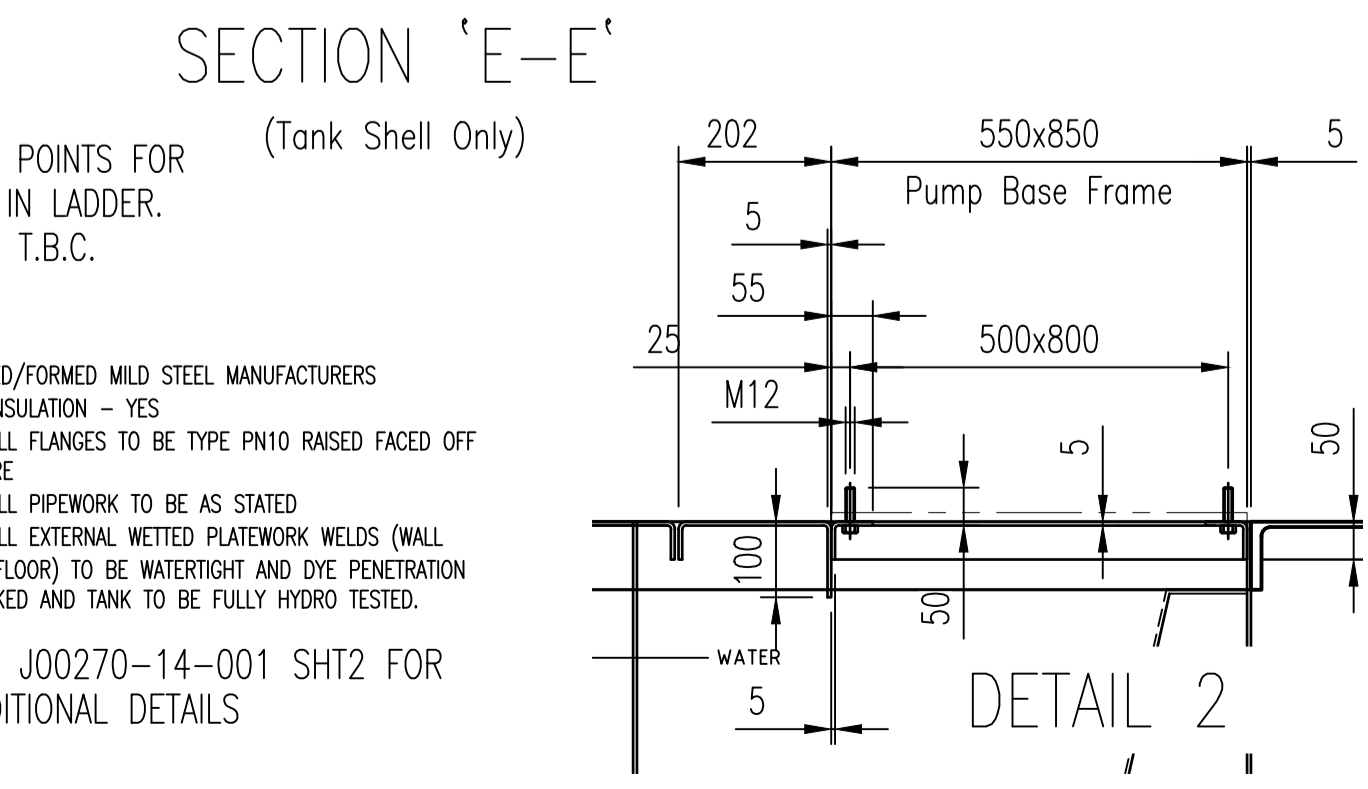
PLAN



SECTION 'C-C'

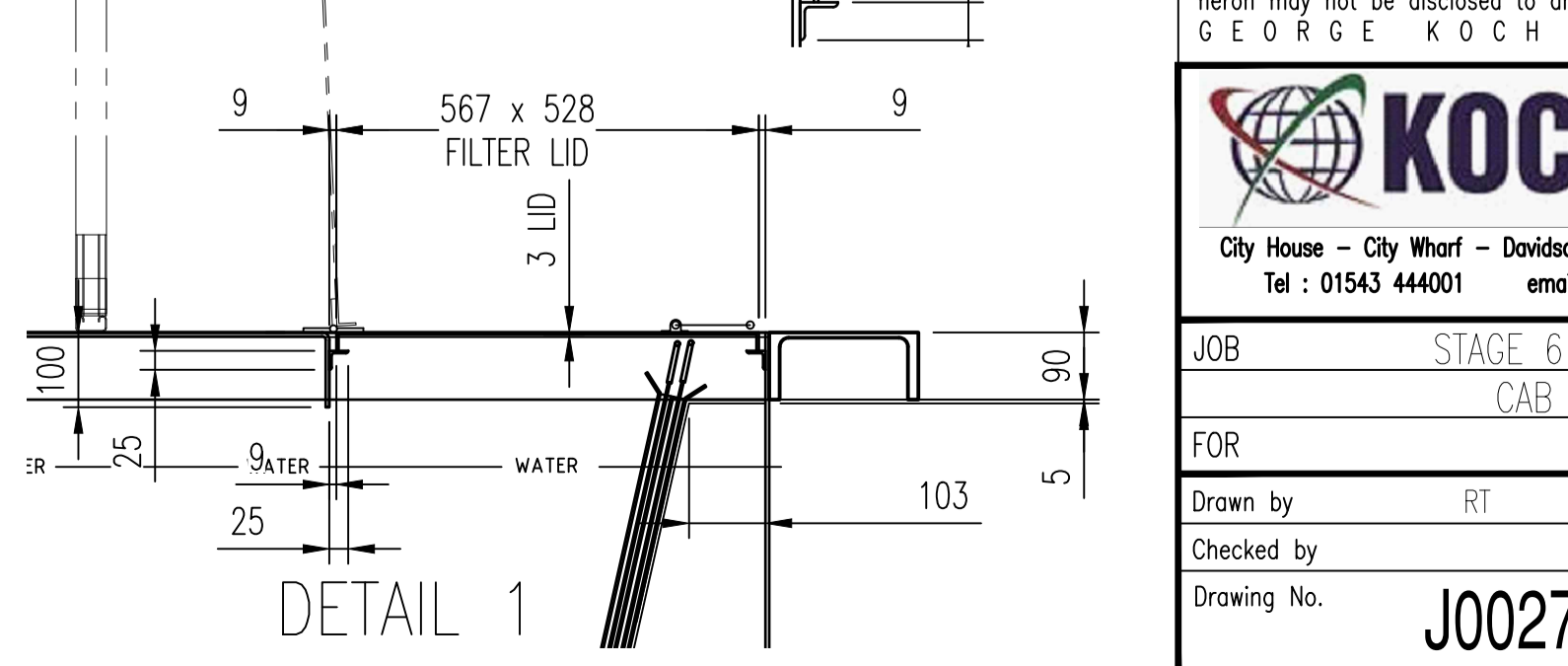


SECTION 'D-D'

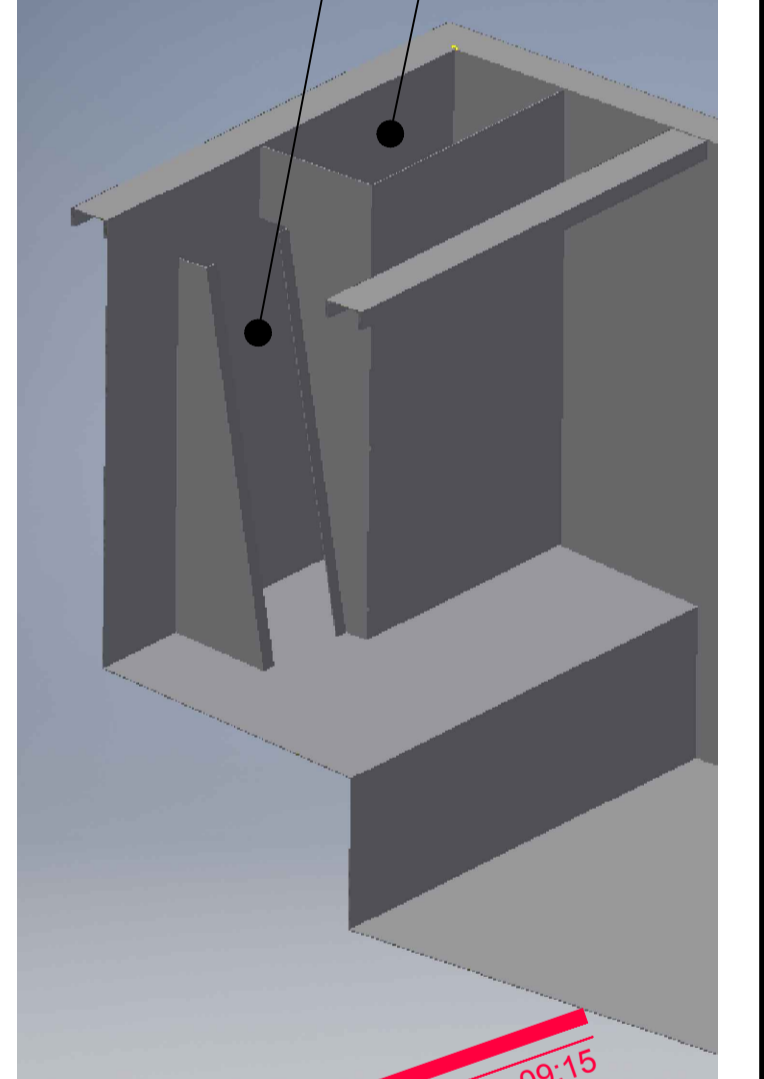


SECTION 'E-E'

DETAIL 2

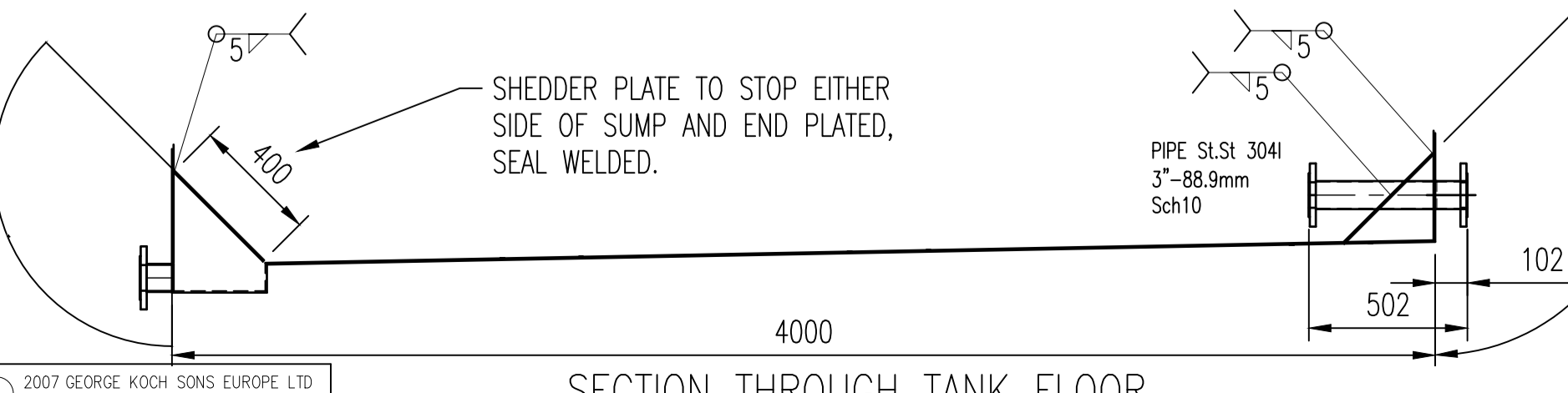


DETAIL 1



- GENERAL NOTES:
- 1) TANK CAPACITY = 32m3.
 - 2) TANK MATERIAL - 3mm 304L STAINLESS STEEL
 - 3) TANK SOLUTION - EP-PAINT
 - 4) SOLUTION TEMPERATURE - 35°C
 - 5) ALL EXTERNAL STEELWORK MILD STEEL, PRIMED AND PAINTED WITH COLOUR TBC
 - 6) ALL WELDS TO BE CLEANED AND SPATTER FREE
 - 7) DIMENSIONAL TOLERANCES = +/- 3mm OVERALL
 - 8) ALL STEELWORK TO BE TYPE S275
 - 9) EXTERNAL STIFFENING BELLY BANDS FROM

- FOLDED/FORMED MILD STEEL MANUFACTURERS
- 10) INSULATION - YES
 - 11) ALL FLANGES TO BE TYPE PN10 RAISED FACED OFF CENTRE
 - 12) ALL PIPEWORK TO BE AS STATED
 - 13) ALL EXTERNAL WETTED PLATEWORK WELDS (WALL AND FLOOR) TO BE WATERTIGHT AND DYE PENETRATION CHECKED AND TANK TO BE FULLY HYDRO TESTED.
- SEE J00270-14-001 SHT2 FOR ADDITIONAL DETAILS



SECTION THROUGH TANK FLOOR

B	TANK SIZE INCREASE	05.02.2019
A	FIRST ISSUE	21.12.2018
NO. REVISIONS		DATE
This drawing and its designs are part of the intellectual property of GEORGE KOCH SONS EUROPE LTD, and may not be copied or used without the written permission of GEORGE KOCH SONS EUROPE LTD. This drawing, its designs and any information hereon may not be disclosed to any third party without the written permission of GEORGE KOCH SONS EUROPE LTD.		
George Koch Sons Europe LTD <i>A smarter solution. Worldwide.</i>		
City House - City Wharf - Davidson Road - Lichfield - Staffordshire - WS14 9DZ Tel : 01543 444001 email : office@kocheurope.com		
JOB	STAGE 6 RINSE TANK DETAILS CAB PAINTING FACILITY	
FOR	JCB CABS	
Drawn by	RT	Scale 1:20
Checked by		Date 14.12.2018
Drawing No.	J00270-14-006B	A1