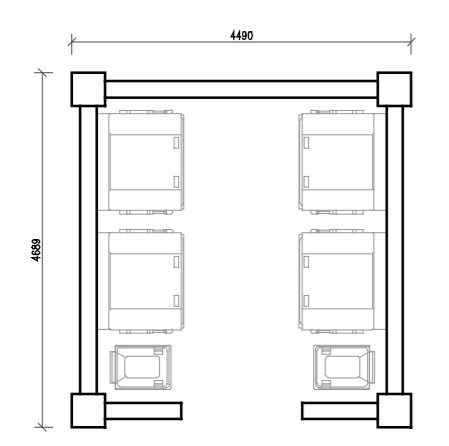
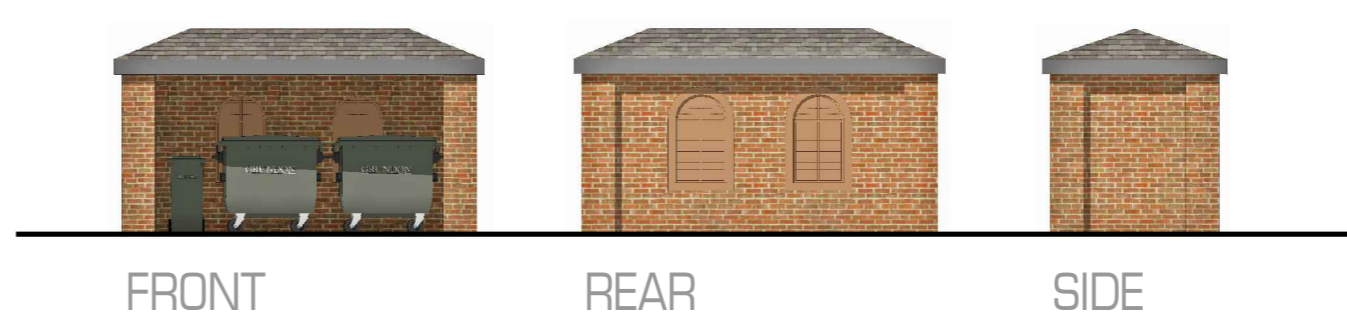


ISOMETRIC VIEW (NOT TO SCALE)

Materials:
Walls
 Red multi facing brickwork
 Grey slate cladding
Roof
 Slate grey cembrit riven edge slate tiles

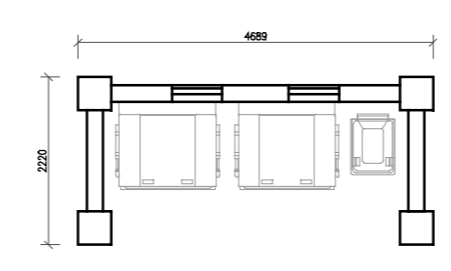


ISOMETRIC VIEW (NOT TO SCALE)



BIN STORE PLAN
 (Apartments)

Bin store to accommodate:
 2no. grey 1100L Eurobin's (residual)
 2no. green 1100L Eurobin's (dry recyclables)
 2no. blue 240L wheelie bins (paper)



BIN STORE PLAN
 (Gatehouse)

Bin store to accommodate:
 1no. grey 1100L Eurobin's (residual)
 1no. green 1100L Eurobin's (dry recyclables)
 1no. blue 240L wheelie bins (paper)

Rev	Amendment	Date	Dm	Chk
REV A	AMENDMENTS IN ACCORDANCE WITH PLANNER'S COMMENTS	01-12-15	JCB	

white ridge architecture
 hilton hall hilton lane easington staffordshire WV11 2SQ
 telephone : 01902 728868
 w : whiteridgearchitecture.co.uk
 e : info@whiteridgearchitecture.co.uk

Client:

 ST JUDE'S HOUSE, HIGH STREET, CHASETOWN, STAFFS WS7 3XG

Site:
 Proposed redevelopment, Barton Marina

Title:
 Bin Store Floor Plans & Concept Elevations

Scale:
 1:100@A2

Site:
 03/11/15

Dwg No.:
 2086/12/Bin Store

Rev:
 A

Written dimensions to be taken only. Do not scale from drawing.
 Minor inaccuracies may occur due to printing processes.

The Waterfront - Barton Marina