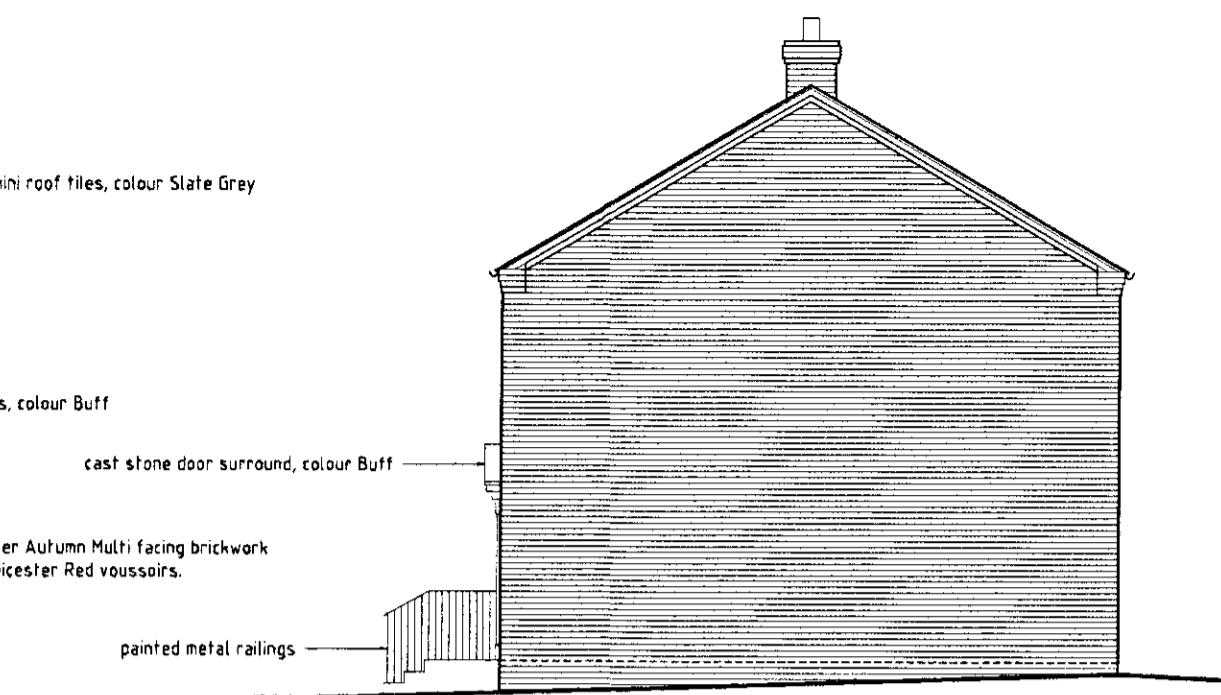


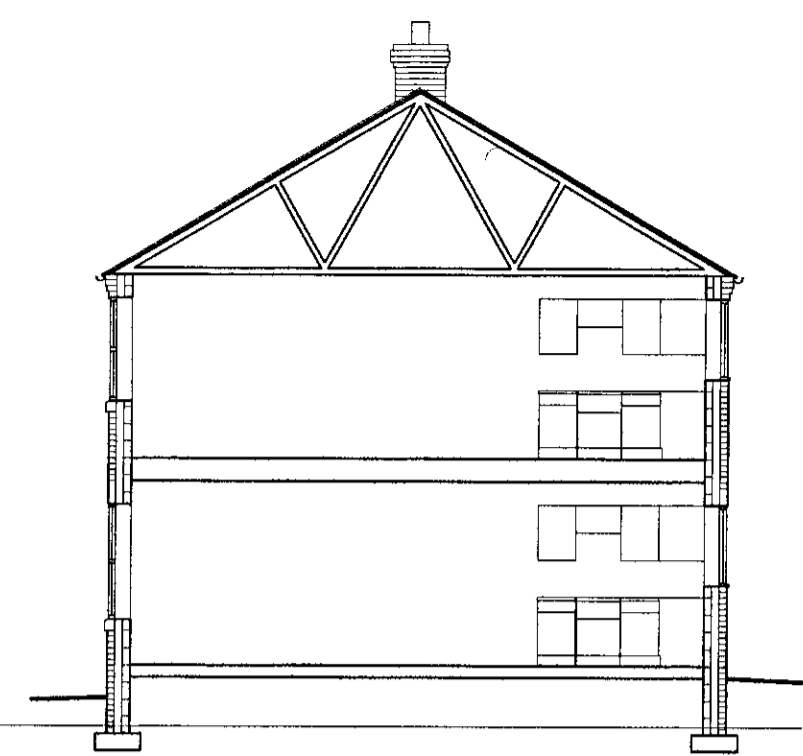
front elevation - SW

Forticrete Gemini roof tiles, colour Slate Grey
 cast stone sills, colour Buff
 Ibsstock Leicester Autumn Multi facing brickwork with Ibsstock Leicester Red voussoirs.

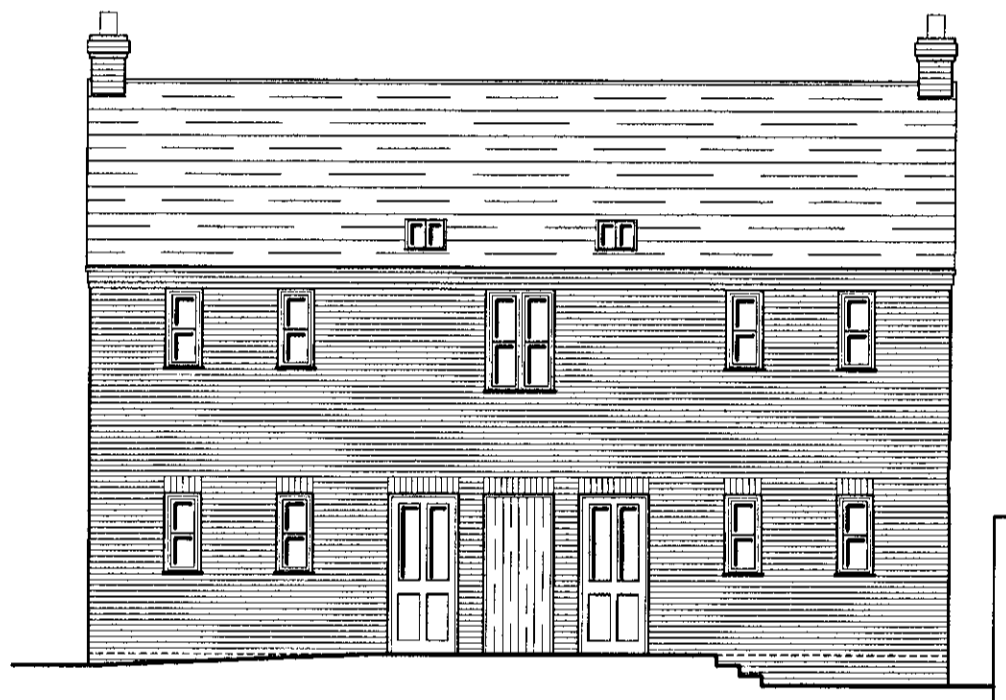


side elevation - SE

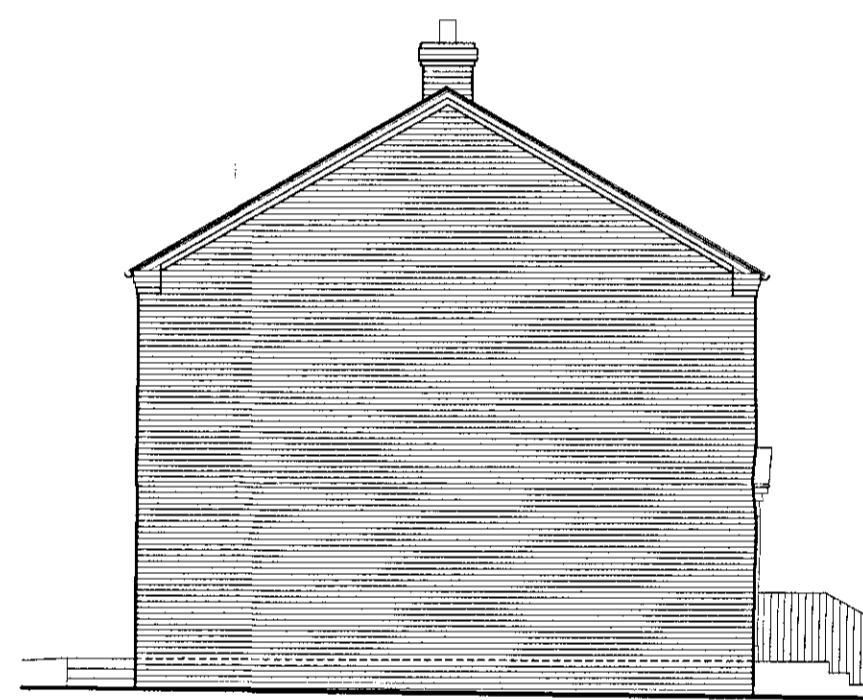
cast stone door surround, colour Buff
 painted metal railings



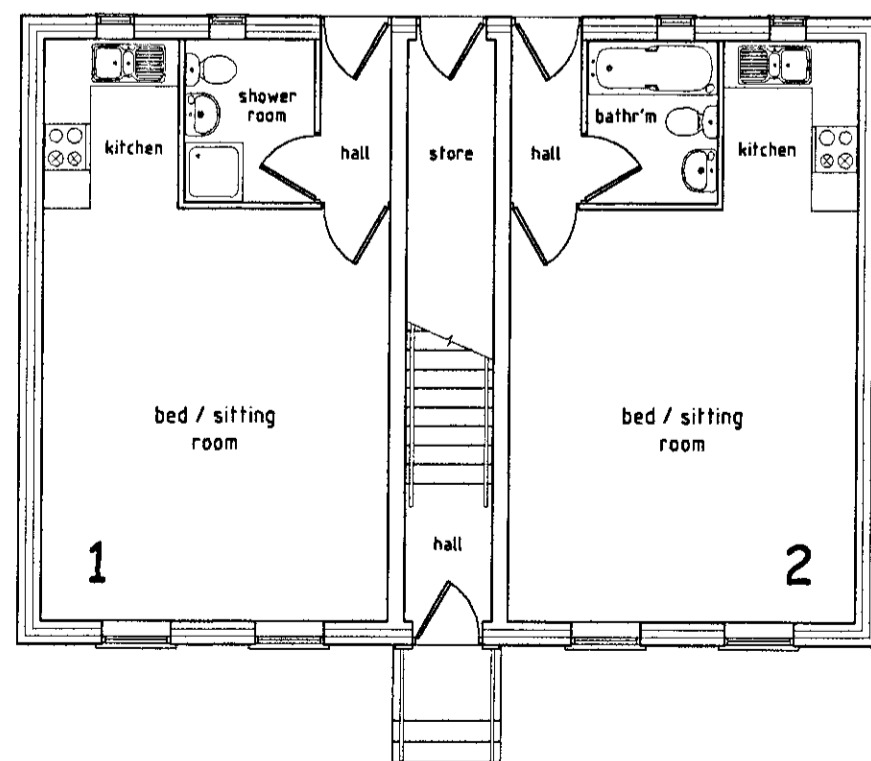
typical cross section



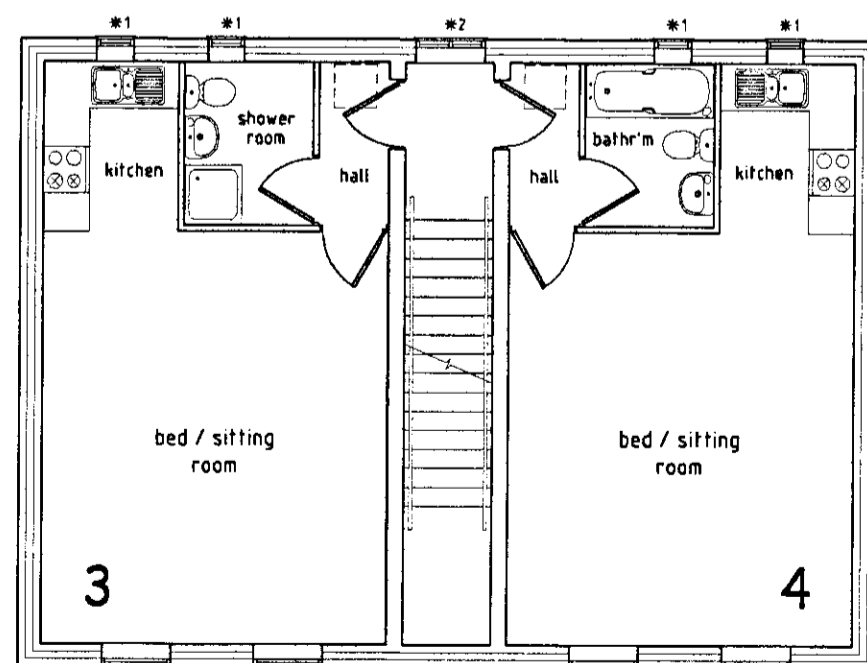
rear elevation - NE



side elevation - NW



ground floor plans

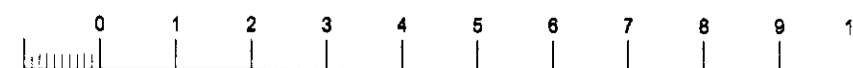


first floor plans

note:
 *1 denotes window to be obscure glazed and non-opening
 *2 denotes window to be obscure glazed and security fastened for opening by the emergency services in the event of fire.

ACCEPTED AS VALID
 14 OCT 2008

RECEIVED
 - 7 OCT 2008
 TIME:



datum 45.000

datum 45.000

Dimensions must be checked, levels verified, and any variations reported prior to commencement on site. All works to be carried out in accordance with the Consultant's drawings, details and specifications, Local Authority requirements and any other relevant legislation. Do not scale this drawing use only figured dimensions.

PA01829/017

A cross section, facing materials + f/f rear window spec. included. 01.09.2008

Prop. Residential Development,
 Park Street,
 Burton upon Trent. for
 HODG ETTS PROPERTY

architectural & development consultant

steve d. pearce

Pant Glas, Manordeillo, Llandeilo, Carmarthenshire, SA19 7BL
 phone + fax 01550.777230, mobile 07836.516873

scheme drawing

scale 1:100 @ A2

date 15.08.2008

drg. no. 658-02.

A